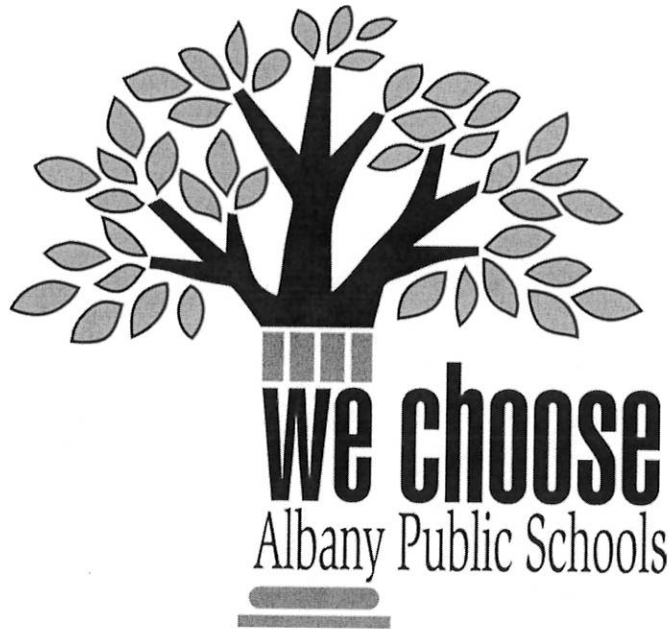


# **2015-16 BUDGET**



# 2015-16 BUDGET

## BOARD OF EDUCATION

GINNIE FARRELL  
PRESIDENT

SUE ADLER  
VICE PRESIDENT

C. ANTHONY OWENS  
SECRETARY

ROSE BRANDON

KENNETH BRUCE

ANNE SAVAGE

## ADMINISTRATION

DR. MARGUERITE VANDEN WYNGAARD  
SUPERINTENDENT OF SCHOOLS

WILLIAM HOGAN  
ASSISTANT SUPERINTENDENT  
FOR BUSINESS AFFAIRS

KATHLEEN CULLIGAN  
HUMAN RESOURCES ADMINISTRATOR

**City School District of Albany**

2015-16 Budget

Adopted April 16, 2015

	<b>Final Budget 2014-15</b>	<b>Adopted Budget 2015-16</b>
--	-------------------------------------	---------------------------------------

**GENERAL SUPPORT**

**BOARD OF EDUCATION**

**Board of Education**

1010.160	BOE Meeting AV Salaries	\$ 9,000	\$ 11,000
1010.200	Equipment	-	-
1010.400	Contractual Expense	41,000	35,000
1010.402	Travel & Conference	1,500	2,500
1010.418	High School Restructuring	30,000	50,000
1010.450	Supplies and Materials	1,000	2,000
1010.490	BOCES Services	-	-
	Subtotal	<u>\$ 82,500</u>	<u>\$ 100,500</u>

**District Meeting**

1060.160	Support Salaries	\$ -	\$ -
1060.400	Contractual - Budget Vote	40,000	38,000
1060.450	Supplies and Materials	900	900
	Subtotal	<u>\$ 40,900</u>	<u>\$ 38,900</u>

**CENTRAL ADMINISTRATION**

**Chief School Administrator**

1240.151	Administrative Salaries	\$ 193,800	\$ 193,800
1240.160	Support Staff Salaries F.T.	157,926	174,169
1240.200	Equipment	-	-
1240.400	Contractual Expense	9,500	9,500
1240.402	Travel & Conference	2,200	4,000
1240.450	Supplies and Materials	3,420	3,420
1240.490	BOCES Services	-	-
	Subtotal	<u>\$ 366,846</u>	<u>\$ 384,889</u>

**FINANCE**

**Business Administration**

1310.151	Administrative Salaries	\$ 162,180	\$ 165,424
1310.160	Support Staff Salaries F.T.	370,228	354,871
1310.161	Support Staff Salaries P.T.	7,500	7,500
1310.162	Support Staff Salaries O.T.	4,000	4,000
1310.200	Equipment	2,500	2,500
1310.400	Contractual Expense	14,000	14,000
1310.402	Travel & Conference	2,755	2,755

**City School District of Albany**

2015-16 Budget

Adopted April 16, 2015

		<u>Final Budget 2014-15</u>	<u>Adopted Budget 2015-16</u>
1310.403	Contr Expense Bond/BAN/RAN	8,000	8,000
1310.450	Supplies and Materials	5,000	5,000
1310.490	BOCES Services	3,100	3,203
	Subtotal	<u>\$ 579,263</u>	<u>\$ 567,253</u>
 <b><u>Auditing</u></b>			
1320.400	Contractual Expense	\$ 66,000	\$ 57,000
1320.450	Supplies and Materials	-	-
	Subtotal	<u>\$ 66,000</u>	<u>\$ 57,000</u>
 <b><u>Tax Collector</u></b>			
1330.161	Support Staff Salaries Part-time	\$ -	\$ 15,000
1330.200	Equipment	-	-
1330.400	Contractual Expense	17,500	2,500
1330.450	Supplies and Materials	400	400
1330.490	BOCES Services	65,000	65,000
	Subtotal	<u>\$ 82,900</u>	<u>\$ 82,900</u>
 <b><u>Purchasing</u></b>			
1345.160	Support Staff Salaries F.T.	\$ 186,277	\$ 192,487
1345.200	Equipment	-	-
1345.400	Contractual Expense	2,300	2,300
1345.402	Travel & Conference	-	-
1345.450	Supplies and Materials	5,500	5,500
1345.490	BOCES Services	-	-
	Subtotal	<u>\$ 194,077</u>	<u>\$ 200,287</u>
 <b><u>Fiscal Agent Fees</u></b>			
1380.400	Contractual Expense	\$ 10,000	\$ 10,000
	Subtotal	<u>\$ 10,000</u>	<u>\$ 10,000</u>
 <b><u>STAFF</u></b>			
<b><u>Legal</u></b>			
1420.400	Attorney Fee Retainer	\$ 150,000	\$ 156,000
1420.401	Attorney Disbursements & Misc	95,000	100,000
	Subtotal	<u>\$ 245,000</u>	<u>\$ 256,000</u>
 <b><u>Human Resources and Program Development,</u></b>			
<b><u>Personnel and Affirmative Action</u></b>			
1430.151	Administrative Salaries	\$ 122,057	\$ 128,057
1430.160	Support Staff Salaries F.T.	261,208	267,971

**City School District of Albany**

2015-16 Budget

Adopted April 16, 2015

		<u>Final Budget 2014-15</u>	<u>Adopted Budget 2015-16</u>
1430.163	Support Staff Salaries Substitutes	5,000	5,000
1430.200	Equipment	-	-
1430.400	Contractual Expense	32,500	32,500
1430.402	Travel & Conference	2,000	2,000
1430.403	Fingerprinting	2,000	2,000
1430.406	Advertising Expense	30,000	30,000
1430.450	Supplies and Materials	12,500	12,500
1430.490	BOCES Services	4,100	4,100
	Subtotal	<u>\$ 471,365</u>	<u>\$ 484,128</u>

**Records Management Officer**

1460.490	BOCES Services	\$ 451	\$ 451
	Subtotal	<u>\$ 451</u>	<u>\$ 451</u>

**Public Information and Services**

1480.160	Support Staff Salaries	\$ 204,363	\$ 210,166
1480.200	Equipment	-	-
1480.400	Contractual Expense	153,000	165,000
1480.450	Supplies and Materials	1,400	4,400
1480.490	BOCES Services	3,800	3,800
	Subtotal	<u>\$ 362,563</u>	<u>\$ 383,366</u>

**CENTRAL SERVICES**

**Operation of Plant**

1620.160	Support Staff Salaries F.T.	\$ 3,480,745	\$ 3,425,358
1620.161	Support Staff Salaries P.T.	216,343	217,571
1620.162	Support Staff Salaries O.T.	100,000	145,000
1620.163	Support Staff Salaries Substitutes	110,250	135,250
1620.164	Salaries Summer Crew	45,000	-
1620.165	Snow Removal Salaries	20,000	20,000
1620.166	Reimbursable Sub & OT	25,000	25,000
1620.200	Equipment	62,425	60,000
1620.400	Contractual Expense	251,300	250,000
1620.401	Natural Gas	850,000	845,000
1620.402	Electricity	2,075,000	1,900,000
1620.403	Telephone	210,000	180,000
1620.404	Water	120,000	120,000
1620.405	Building Rental Fees - Warehouse	-	-
1620.405.20	Rental Fees - YMCA North Albany Academy	132,166	134,510
1620.405.35	Rental Fees - Academy Park Parking	43,500	32,400
1620.406	Waste Removal	115,000	115,000

**City School District of Albany**

2015-16 Budget

Adopted April 16, 2015

		<b>Final Budget 2014-15</b>	<b>Adopted Budget 2015-16</b>
1620.407	Pest Control	25,000	25,000
1620.420	Cellular Telephones/Radios - District Wide	115,000	90,000
1620.450	Cleaning Supplies	175,000	172,000
1620.451	Uniform & Mop Supplies	34,245	34,245
1620.452	Office Supplies	1,500	1,500
1620.490	BOCES Services	-	-
	Subtotal	<u>\$ 8,207,474</u>	<u>\$ 7,927,834</u>

**Maintenance of Plant**

1621.160	Support Staff Salaries F.T.	\$ 867,421	\$ 878,940
1621.162	Support Staff Salaries O.T.	40,000	40,000
1621.163	Support Staff Salaries Substitutes	25,000	-
1621.165	Snow Removal Salaries	18,000	18,000
1621.200	Equipment	59,785	58,000
1621.400	Contractual Expense	109,000	105,000
1621.407	Repairs - Reimbursable by FEMA	-	-
1621.408	Repairs - Preventive Maintenance	277,860	275,000
1621.409	Repairs - Outside Contracts	215,000	210,000
1621.410	Maintenance Contracts	156,000	150,000
1621.410	Maintenance Supplies	100,000	100,000
1621.451	Electrical Supplies	24,000	24,000
1621.452	Plumbing Supplies	22,000	22,000
1621.453	Heating Supplies	14,000	14,000
1621.454	Carpentry Supplies	25,000	20,000
1621.455	Glass Supplies	5,000	5,000
1621.456	Grounds Supplies	20,500	20,500
1621.457	Painting Supplies	19,000	19,000
1621.458	Lock Supplies	5,000	5,000
1621.459	Project Supplies	28,000	28,000
1621.490	BOCES Services	31,820	31,820
	Subtotal	<u>\$ 2,062,386</u>	<u>\$ 2,024,260</u>

**Central Printing and Mailing**

1670.160	Support Staff Salaries F.T.	\$ 45,468	\$ 46,049
1670.200	Equipment	-	-
1670.401	Duplicating Leases & Other Costs	260,000	280,000
1670.404	Postage	102,200	104,000
1670.450	Supplies and Other Materials	20,000	20,000
1670.490	BOCES Services	-	-
	Subtotal	<u>\$ 427,668</u>	<u>\$ 450,049</u>

**City School District of Albany**

2015-16 Budget

Adopted April 16, 2015

	<b>Final Budget 2014-15</b>	<b>Adopted Budget 2015-16</b>
--	-------------------------------------	---------------------------------------

**Central Data Processing**

1680.151	Administrative Salaries	\$ 159,390	\$ 162,577
1680.160	Support Staff Salaries F.T.	250,536	254,314
1680.200	Equipment	7,000	7,000
1680.400	Contractual Expense	16,500	16,500
1680.402	Travel & Conference	1,000	1,000
1680.410	Network Support Service	30,000	25,000
1680.450	Supplies and Other Materials	35,000	35,000
1680.490	BOCES Services	96,000	150,000
	Subtotal	<u>\$ 595,426</u>	<u>\$ 651,391</u>

**SPECIAL ITEMS**

1910.400	Unallocated Insurance	\$ 488,000	\$ 488,000
1910.401	Student Accident Insurance	36,000	36,000
1920.400	School Boards Association Dues	8,300	8,300
1930.400	Judgments and Claims	-	-
1964.400	Refund of Real Property Tax	500,000	500,000
1989.400	Unclassified - Grants	85,000	87,500
	Subtotal	<u>\$ 1,117,300</u>	<u>\$ 1,119,800</u>

**INSTRUCTION**

**ADMINISTRATION AND IMPROVEMENT**

**Curriculum Development and Supervision**

2010.150	Curriculum Development - Salaries	\$ 121,000	\$ 127,200
2010.151	Administrative Salaries	477,529	477,553
2010.152	Staff Development	69,500	69,500
2010.153	SLO's/NWEA proctors/NYS test scorer Salaries	183,000	125,000
2010.160	Support Staff Salaries F.T.	50,000	52,531
2010.200	Equipment	-	-
2010.400	Contractual Expense	40,970	120,470
2010.402	Travel & Conference	7,650	7,050
2010.403	Assessment Costs	367,000	500,000
2010.404	Professional Development	10,000	23,200
2010.450	Supplies and Materials	4,000	4,000
2010.490	BOCES Services	114,240	131,000
	Subtotal	<u>\$ 1,444,889</u>	<u>\$ 1,637,504</u>

**City School District of Albany**

2015-16 Budget

Adopted April 16, 2015

		<b>Final Budget 2014-15</b>	<b>Adopted Budget 2015-16</b>
<b><u>Supervision-Regular School</u></b>			
2020.151	Administrative Salaries	\$ 3,288,735	\$ 3,391,676
2020.153	Administrative Salaries - Substitutes	27,000	27,000
2020.160	Support Staff Salaries F.T.	1,742,587	1,622,970
2020.161	Support Staff Salaries P.T.	2,000	-
2020.162	Support Staff Salaries O.T.	20,200	20,200
2020.163	Support Staff Salaries Substitutes	23,500	23,500
2020.200	Equipment	104,000	125,500
2020.400	Contractual Expense	49,665	56,385
2020.402	Travel & Conference	17,900	25,550
2020.403	Inservice	12,000	12,000
2020.408	Instructional Repairs	1,225	1,100
2020.410	Maintenance Contracts	500	500
2020.450	Supplies and Materials	115,620	116,523
2020.490	BOCES Services	-	-
	Subtotal	<b>\$ 5,404,932</b>	<b>\$ 5,422,904</b>

**INSTRUCTION-TEACHING**

**Teaching-Regular School**

2110.110	Teacher Salaries, Pre-K	\$ 323,271	\$ 340,772
2110.111	Teacher Salaries, Kindergarten	2,122,160	2,086,041
2110.120	Teacher Salaries, Grades 1-6	18,912,233	20,211,282
2110.121	Teacher Salaries, ESL	1,322,015	1,722,583
2110.130	Teacher Salaries, Grades 7-12	16,459,142	17,088,258
2110.131	Lunch Supervision - Teaching Staff	17,500	10,000
2110.132	Bus Supervision	13,000	10,000
2110.133	6th Class Stipends	408,000	432,000
2110.140	Substitute Teacher Salaries	1,460,000	1,424,000
2110.141	Home Tutoring Salaries	288,750	200,000
2110.142	After School Tutoring Salaries	411,182	400,932
2110.143	Teacher Mentor Program	16,250	16,250
2110.152	Extend Day MLE Site Coordinators	20,000	20,000
2110.155	Mileage-Traveling Teachers	3,000	3,000
2110.156	National Board Certification Stipends	54,000	54,000
2110.157	IBO Student Support	12,000	12,000
2110.160	Support Staff Salaries	168,408	208,605
2110.166	Lunch Supervision - Support Staff	295,000	301,862
2110.167	Strategic Planning Salaries	75,000	-
2110.170	Teacher Aide Salaries	384,842	342,181
2110.175	Teacher Assistant Salaries	773,726	1,169,948
2110.180	Home School Coordinator Salaries	986,423	1,046,175



**City School District of Albany**

2015-16 Budget

Adopted April 16, 2015

		<b>Final Budget 2014-15</b>	<b>Adopted Budget 2015-16</b>
2110.181	Recruiters - Community Outreach Liasion	12,000	12,000
2110.182	Current Yr Retirees Sick Leave & Vac Buyout	500,000	300,000
2110.184	Health Insurance Buyback	420,000	420,000
2110.200	Equipment	132,309	130,282
2110.400	Contractual Expense	2,260,773	2,644,213
2110.400.29.24	IBO Fees & Materials	40,000	40,000
2110.400.29.25	Robotics	4,000	4,000
2110.400.29.26	Yearbook Subsidy	4,000	4,000
2110.402	Travel & Conference	5,350	8,000
2110.403	Inservice	500	300
2110.406	Field Trips	33,360	29,350
2110.407	Dues/Fees	4,459	4,500
2110.408	Instructional Repairs	6,855	6,900
2110.410	Maintenance Contracts	500	500
2110.411	Graduation	28,850	27,250
2110.412	Debate Team	8,000	8,000
2110.413	Drama Club	8,000	8,000
2110.414	Police Supervision	4,250	4,250
2110.415	Tuition Reimbursement	75,000	70,000
2110.416	Section 504 Expenses	2,500	2,500
2110.450	Supplies and Materials	511,725	537,236
2110.451	Supplies and Materials - Science Center	25,110	25,110
2110.451-PE	Supplies and Materials - Phys Ed	25,000	25,000
2110.470	Non-Resident Tuition	350,000	300,000
2110.471	Dormitory Authority - Private Sch Cap	200,000	200,000
2110.472	Tutoring - Incarcerated, Psychiatric	150,000	150,000
2110.473	Charter School Payments	32,034,400	33,579,150
2110.480	Textbooks	903,928	914,753
2110.490	BOCES Services	47,451	84,000
	Subtotal	<u>\$ 82,324,222</u>	<u>\$ 86,639,183</u>

**Special Education Programs**

2250.150	Instructional Salaries - Teachers	\$ 10,286,858	\$ 10,224,852
2250.151	Instructional Salaries - Administrative	224,489	228,978
2250.152	SUNY Program Teachers	59,232	62,695
2250.153	Instructional Salaries - Summer Salaries	40,000	40,000
2250.160	Support Staff Salaries - Clerical	331,227	244,197
2250.170	Support Staff Salaries - Teacher Aides	1,383,776	1,198,730
2250.175	Support Staff Salaries - Teach Assist	2,861,376	3,247,471
2250.200	Equipment	-	-
2250.400	Contractual Expense	10,000	-
2250.402	Travel & Conference	1,500	-

**City School District of Albany**

2015-16 Budget

Adopted April 16, 2015

		<b>Final Budget 2014-15</b>	<b>Adopted Budget 2015-16</b>
2250.406	Field Trips	400	400
2250.407	Regional Rehab OT/PT	545,000	700,000
2250.409	County Reimbursement - Maintenance Costs	150,000	100,000
2250.410	Maintenance Contracts	475	475
2250.417	State Aid Consultant Fees	15,000	20,000
2250.450	Supplies and Materials	18,450	24,550
2250.470	Spec Ed Private School Tuition	6,800,000	6,500,000
2250.471	Spec Ed Private Parentally Placed	100,000	300,000
2250.472	State Operated Schools Deaf & Blind	-	-
2250.473	Charter School Payments	381,485	381,485
2250.490	BOCES Tuition	6,000,000	5,615,000
	Subtotal	<u>\$ 29,209,268</u>	<u>\$ 28,888,833</u>
 <b><u>Occupational Education</u></b>			
2280.150	Instructional Salaries	\$ 698,119	\$ 747,336
2280.160	Support Staff Salaries	-	-
2280.200	Equipment	-	40,000
2280.400	Contractual Expense	14,500	14,500
2280.402	Travel & Conference	-	-
2280.406	Field Trips	1,000	1,000
2280.408	Instructional Repairs	1,200	1,200
2280.450	Supplies and Materials	29,600	39,600
2280.490	BOCES Services	45,487	63,487
	Subtotal	<u>\$ 789,906</u>	<u>\$ 907,123</u>
 <b><u>Teaching-Special Schools</u></b>			
2330.120	Instructional Salaries - Elem Summer School	\$ -	\$ -
2330.130	Instructional Salaries - Secondary Summer School	318,500	308,000
2330.160	Support Staff Salaries - Summer Sch	59,200	74,200
2330.200	Equipment	-	-
2330.400	Contractual Expense	4,000	4,000
2330.450	Supplies and Materials	6,000	6,000
	Subtotal	<u>\$ 387,700</u>	<u>\$ 392,200</u>
2331.150	Instructional Salaries - Night School	\$ 2,000	\$ 2,000
2331.160	Support Staff Salaries - Night School	8,000	8,000
2331.200	Equipment	-	-
2331.400	Contractual Expense	36,000	24,200
2331.450	Supplies and Materials	-	-
	Subtotal	<u>\$ 46,000</u>	<u>\$ 34,200</u>

**City School District of Albany**

2015-16 Budget

Adopted April 16, 2015

		<b>Final Budget 2014-15</b>	<b>Adopted Budget 2015-16</b>
2333.157	Hourly Instruction - Abrookin Extended Day	\$ 295,000	\$ 300,000
2333.167	Hourly Support - Abrookin Extended Day	51,000	55,000
2333.200	Equipment - Abrookin Extended Day	-	-
2333.400	Contractual Expense - Abrookin Extended Day	-	-
2333.450	Supplies and Materials - Abrookin Extended Day	11,337	12,861
	Subtotal	<u>\$ 357,337</u>	<u>\$ 367,861</u>

**INSTRUCTIONAL MEDIA**

**School Library**

2610.150	Instructional Salaries	\$ 653,555	\$ 662,687
2610.200	Equipment	-	-
2610.400	Contractual Expense	1,200	1,200
2610.450	Supplies and Materials	8,000	7,500
2610.460	State Aided Library Materials	85,838	87,339
2610.490	BOCES Services	26,393	29,011
	Subtotal	<u>\$ 774,986</u>	<u>\$ 787,737</u>

**Computer Assisted Instruction**

2630.151	Administrative Salaries	\$ 51,226	\$ 52,250
2630.160	Support Staff Salaries	-	-
2630.190	Instructional Computer Tech. Salaries	581,892	641,326
2630.191	Instructional Computer Tech. Salaries - Summer	20,000	20,000
2630.192	Instructional Computer Tech. Salaries - OT	13,000	18,000
2630.200	Equipment	-	-
2630.220	State Aided Computer Hardware	435,665	450,665
2630.400	Contractual Expense	100,000	100,000
2630.401	E Rate Purchases (Net)	120,000	120,000
2630.402	Travel & Conference	1,500	1,500
2630.408	Instructional Repairs	2,000	2,000
2630.411	Internet Charges & Fibertech Yrly Maint	50,000	50,000
2630.450	Supplies and Materials	140,000	170,000
2630.460	State Aided Computer Software	476,817	576,817
2630.490	BOCES Services	-	-
	Subtotal	<u>\$ 1,992,100</u>	<u>\$ 2,202,558</u>

**PUPIL SERVICES (PUPIL PERSONNEL SERVICES  
AND PUPIL ACTIVITIES)**

**Attendance-Regular School**

2805.150	Instructional Salaries	\$ 296,672	\$ 254,131
2805.151	Administrative Salaries	59,736	161,514

**City School District of Albany**

2015-16 Budget

Adopted April 16, 2015

		<b>Final Budget 2014-15</b>	<b>Adopted Budget 2015-16</b>
2805.160	Clerical Salaries - Central Registration	125,097	130,235
2805.161	Clerical Salaries - Central Registration Part-time	-	4,000
2805.180	Hall Monitor Salaries	2,471,207	2,525,894
2805.182	Hall Monitor Salaries O.T.	45,000	55,000
2805.190	Security Full-time	140,278	147,380
2805.191	Security Part-time	-	51,776
2805.192	Security Salaries O.T.	500	-
2805.193	Hall Monitor/Security Salaries - Substitutes	154,700	175,000
2805.194	Hall Monitor Salaries -Extended Day AHS & Hac	38,115	38,115
2805.200	Equipment	525,000	75,000
2805.400	Contractual Expense	159,000	167,500
2805.402	Travel & Conference	5,100	4,100
2805.450	Supplies and Materials	14,165	15,600
2805.451	Hall Monitor Uniforms	4,000	4,000
2805.490	BOCES Services	-	-
	Subtotal	<b>\$ 4,038,570</b>	<b>\$ 3,809,245</b>

**Guidance-Regular School**

2810.150	Instructional Salaries	\$ 1,135,423	\$ 1,198,941
2810.151	Administrative Salaries	59,736	60,931
2810.160	Support Staff Salaries	100,788	101,959
2810.200	Equipment	-	-
2810.400	Contractual Expense	-	-
2810.450	Supplies and Materials	500	500
2810.490	BOCES Services	-	-
	Subtotal	<b>\$ 1,296,447</b>	<b>\$ 1,362,331</b>

**Health Services-Regular School**

2815.150	Instructional Salaries	\$ 35,000	\$ 35,000
2815.151	Administrative Salaries	66,200	69,063
2815.154	Registered Nurses Salaries	1,847,572	2,046,161
2815.155	RN Salaries Summer Physicals	4,767	4,767
2815.160	Support Staff Salaries	23,024	23,024
2815.200	Equipment - AED replacements	6,200	6,200
2815.400	Contractual Expense	84,150	84,150
2815.402	Travel & Conference	595	595
2815.403	Reconditioning	1,140	1,140
2815.406	Periodicals & Audio Visual	-	-
2815.409	Private & Parochial Health Services	210,000	215,000
2815.410	Transportation	570	570
2815.450	Supplies and Materials	20,388	20,388
2815.490	BOCES Services	-	-

**City School District of Albany**

2015-16 Budget

Adopted April 16, 2015

		<b>Final Budget 2014-15</b>	<b>Adopted Budget 2015-16</b>
		<hr/>	<hr/>
	Subtotal	\$ 2,299,606	\$ 2,506,058
<b><u>Psychological Services-Regular School</u></b>			
2820.150	Instructional Salaries	\$ 1,156,929	\$ 1,676,979
2820.200	Equipment	-	-
2820.400	Contractual Expense	-	-
2820.450	Supplies and Materials	-	-
2820.490	BOCES Services	-	-
	Subtotal	<hr/> \$ 1,156,929	<hr/> \$ 1,676,979
<b><u>Social Work Services-Regular School</u></b>			
2825.150	Instructional Salaries	\$ 1,826,338	\$ 2,161,117
2825.200	Equipment	-	-
2825.400	Contractual Expense	-	-
2825.450	Supplies and Materials	-	-
2825.490	BOCES Services	-	-
	Subtotal	<hr/> \$ 1,826,338	<hr/> \$ 2,161,117
<b><u>Cocurricular Activities-Regular School</u></b>			
2850.150	Recreation Program Salaries	\$ -	\$ -
2850.152	Extraclassroom Advisors Salaries	40,000	42,500
2850.153	Intramural Program Salaries	28,000	34,000
2850.490	BOCES Services	-	-
	Subtotal	<hr/> \$ 68,000	<hr/> \$ 76,500
<b><u>Interscholastic Athletics-Regular School</u></b>			
2855.150	Instructional Salaries - Coaches	\$ 294,100	\$ 294,100
2855.151	Instructional Salaries - Administrative	66,200	69,063
2855.152	Instructional Salaries - Supervisor	74,880	74,880
2855.160	Support Staff Salaries	81,706	83,024
2855.200	Equipment	32,000	15,400
2855.400	Contractual Expense	3,400	3,400
2855.401	Officials	49,000	49,980
2855.402	Travel & Conference	1,000	1,000
2855.403	Reconditioning	7,000	7,000
2855.404	Police - Security	18,000	18,000
2855.405	Entry Fees/Dues/Registrations	31,000	31,000
2855.407	Uniforms	32,000	32,000
2855.408	Awards	6,500	6,500
2855.410	Transportation Costs	82,000	82,000
2855.420	Ambulance	3,000	3,000
2855.450	Supplies and Materials	60,000	60,000

**City School District of Albany**

2015-16 Budget

Adopted April 16, 2015

		<u>Final Budget 2014-15</u>	<u>Adopted Budget 2015-16</u>
2855.490	BOCES Services	-	-
	Subtotal	<u>\$ 841,786</u>	<u>\$ 830,347</u>

**PUPIL TRANSPORTATION**

**District Transportation Services**

5510.160	Support Staff Salaries F.T.	\$ 145,635	\$ 146,190
5510.162	Support Staff Salaries O.T.	2,700	2,700
5510.200	Equipment	2,850	2,850
5510.400	Contractual Expense	4,850	4,850
5510.402	Travel & Conference	500	500
5510.403	Inservice	250	250
5510.404	Postage	6,000	6,000
5510.409	Insurance Costs	25,194	25,194
5510.410	Maintenance Contracts	5,500	5,800
5510.450	Supplies and Materials	3,000	3,000
5510.451	Gasoline	925,000	925,000
5510.490	Trans BOCES Service (Shen)	6,000	6,000
	Subtotal	<u>\$ 1,127,479</u>	<u>\$ 1,128,334</u>

**Garage Building**

5530.403	Telephone	\$ 10,700	\$ 10,700
	Subtotal	<u>\$ 10,700</u>	<u>\$ 10,700</u>

**Contract Transportation**

5540.400	Contract Transportation Gr K-6 & Spec Ed	\$ 5,350,994	\$ 5,288,713
5540.401	Public Transportation Grades 7-12	895,230	899,600
5540.402	Contract Transportation Bus Aides	445,500	594,000
	Subtotal	<u>\$ 6,691,724</u>	<u>\$ 6,782,313</u>

**UNDISTRIBUTED EXPENSES**

**Employee Benefits**

9010.800	State Retirement	\$ 3,742,584	\$ 3,202,775
9020.800	Teacher Retirement	12,604,187	9,697,769
9030.800	Social Security	6,840,842	6,786,231
9040.800	Workers' Compensation Claims	836,544	837,801
9040.801	Workers' Comp Excess Premium	80,000	100,000
9040.802	Workers' Comp Administration	33,700	33,700
9045.800	Life Insurance	2,760	2,760
9050.800	Unemployment Insurance	244,765	170,161
9060.800	Medical Insurance Premiums	24,110,724	24,857,514

**City School District of Albany**

2015-16 Budget

Adopted April 16, 2015

		<u>Final Budget 2014-15</u>	<u>Adopted Budget 2015-16</u>
9060.801	Medicare Reimbursement	72,089	66,088
9070.800	Employee Assistance Program	32,980	32,980
9089.800	Teacher/Admin 403B Retirement Incentives	1,100,000	600,000
	Subtotal	<u>\$ 49,701,175</u>	<u>\$ 46,387,779</u>
<b><u>Interfund Transfers</u></b>			
9901.930	Transfer to School Lunch Fund	\$ 125,000	\$ -
	<i>Transfer to Special Aid Fund:</i>		
9901.951	Special Aid - Community Schools	100,000	100,000
9901.952	Special Aid - Summer Special Ed	395,000	395,000
9901.955	Special Aid - Matching Grants	160,000	160,000
9901.960	Transfer to Debt Service Fund	13,900,000	14,200,000
	Subtotal	<u>\$ 14,680,000</u>	<u>\$ 14,855,000</u>
<b><u>Debt Service - Principal</u></b>			
9710.600	Serial Bonds	\$ -	\$ -
9789.600	Other Debt - New York Power Authority	348,784	354,930
	Subtotal	<u>\$ 348,784</u>	<u>\$ 354,930</u>
<b><u>Debt Service - Interest</u></b>			
9710.700	Serial Bonds	\$ -	\$ -
9770.700	Revenue Anticipation Notes	-	-
9789.700	Other Debt - New York Power Authority	21,651	11,038
	Subtotal	<u>\$ 21,651</u>	<u>\$ 11,038</u>
<b>TOTAL GENERAL FUND EXPENSES</b>		<u><u>\$ 221,752,648</u></u>	<u><u>\$ 223,971,782</u></u>

ALBANY CITY SCHOOL DISTRICT  
THREE PART BUDGET SUMMARY

State Budget Code	2014-2015 Budget			Total
	Administrative	Program	Capital	
1099 Board of Education	\$ 93,400		\$ 30,000	\$ 123,400
1299 Central Administration	366,846			366,846
1399 Finance	932,240			932,240
1420 Legal Services	245,000			245,000
1430 Personnel	471,365			471,365
1460 Records Management	451			451
1480 Public Information	362,563			362,563
1620 Operations	75,200	\$ 39,800	8,092,474	8,207,474
1621 Maintenance			2,062,386	2,062,386
1670 Central Printing & Mailing	120,868	306,800		427,668
1680 Central Data Processing	595,426			595,426
1999 Insurance, Dues & Misc.	617,300		500,000	1,117,300
2099 Supervision	6,849,821			6,849,821
2999 Instruction		127,409,195		127,409,195
5599 Pupil Transportation		7,829,903		7,829,903
9098 Employee Benefits	4,662,765	42,205,641	2,832,768	49,701,175
9901 Summer Special Ed, Community Schools & Lunch Program		780,000		780,000
9951 Debt Service & Capital Fund			14,270,435	14,270,435
<b>TOTALS</b>	\$ 15,393,245	\$ 178,571,339	\$ 27,788,063	\$ 221,752,648
<b>Three Part Percents of Total</b>	6.94%	80.53%	12.53%	
<b>Administrative Ratio</b>	7.94%			

The Administrative Ratio is the administrative total divided by administrative plus program total amounts.

THREE PART CONTINGENT BUDGET

This would be the required budget should voters defeat the proposed budget on May 19.	2014-2015 Budget - with reductions			Total
	Administrative	Program	Capital	
Original Proposed Budget	\$ 15,393,245	\$ 178,571,339	\$ 27,788,063	\$ 221,752,648
Less Mandated Reductions	(17,968)	(849,343)	(102,886)	(970,197)
Revised TOTALS	\$ 15,375,277	\$ 177,721,996	\$ 27,685,177	\$ 220,782,451
<b>Three Part Percents of Total</b>	6.96%	80.50%	12.54%	
<b>Administrative Ratio</b>	7.962%			

The Administrative Ratio is the administrative total divided by administrative plus program total amounts.

	2015-2016 Budget			Total
	Administrative	Program	Capital	
\$	89,400		\$ 50,000	\$ 139,400
	384,889			384,889
	917,440			917,440
	256,000			256,000
	484,128			484,128
	451			451
	383,366			383,366
	55,200	\$ 34,800	7,837,834	7,927,834
			2,024,260	2,024,260
	121,449	328,600		450,049
	651,391			651,391
	619,800		500,000	1,119,800
	7,060,408			7,060,408
		132,642,272		132,642,272
		7,921,347		7,921,347
	4,159,174	39,719,073	2,509,532	46,387,779
		655,000		655,000
\$	15,183,096	\$ 181,301,092	\$ 27,487,594	\$ 223,971,782
	6.78%	80.95%	12.27%	
	7.73%			

The Administrative Ratio is the administrative total divided by administrative plus program total amounts.

	2015-2016 Budget - with reductions			Total
	Administrative	Program	Capital	
\$	15,183,096	\$ 181,301,092	\$ 27,487,594	\$ 223,971,782
\$	(20,634)	(979,244)	(101,714)	(1,101,592)
\$	15,162,462	\$ 180,321,848	\$ 27,385,880	\$ 222,870,190
	6.80%	80.91%	12.29%	
	7.756%			

The Administrative Ratio is the administrative total divided by administrative plus program total amounts.



## 2015-2016 CONTINGENT BUDGET

*If voters do not approve the proposed budget on May 19, under state law the Board has three alternatives:*

- Put the same budget up for a re-vote*
- Present a revised budget for voter consideration*
- Adopt a contingency budget*

### EXPENDITURES

<b>2015-16 Proposed Budget</b>	<b>\$223,971,782</b>
<b>2015-16 Contingent Budget</b>	<b>\$222,870,190</b>
<b>Mandated (Non-contingency) Reductions</b>	<b>\$618,456</b>
<b>Mandated Reductions Under Property Tax Cap Law</b>	<b>\$483,136</b>

In the event the proposed budget fails and the Board adopts a contingent budget, additional reductions in the amount of \$1,101,592 would be required. The reductions would include the traditional non-contingency items (see below) and an additional reduction of \$483,136 due to a new requirement contained in the Property Tax Cap law. Under a contingent budget, the tax levy for 2015-16 could not exceed the current 2014-15 tax levy.

*State law closely regulates district expenditures under a contingency budget. The district cannot spend money on:*

- \*Certain Student supplies*
- \*Certain Equipment*
- \*Certain salary increases*
- \*Community use of buildings and grounds*

# City School District of Albany

## Expenditure Summary

	(current year) <b>2014-15</b>	(next year) <b>2015-16</b>	Budget-to-Budget Dollar Change	Percent Change
General Fund Budget:	\$221,752,648	\$223,971,782	\$2,219,134	1.00%
		(proposed)		

## Revenue Summary

	(current year) <b>2014-15</b>	(next year) <b>2015-16</b>	Budget-to-Budget Dollar Change	Percent Change
<b>General Fund Revenue:</b>				
Local Revenue	\$14,954,400	\$15,110,000	\$155,600	
State Aid	86,190,738	90,381,680	4,190,942	
Federal Aid	610,000	686,000	76,000	
Use of Reserves	2,100,000	500,000	(1,600,000)	
Appropriated Fund Balance	5,000,000	3,295,000	(1,705,000)	
Non-Tax Revenue Sub-Total	\$108,855,138	\$109,972,680	\$1,117,542	1.03%
Homestead Tax Levy	\$67,429,652	\$68,087,594	\$657,942	
Non-Homestead Tax Levy	45,467,858	45,911,508	443,650	
Total Property Tax Levy	\$112,897,510	\$113,999,102	\$1,101,592	0.98%
<b>Total Revenue</b>	<b>\$221,752,648</b>	<b>\$223,971,782</b>	<b>\$2,219,134</b>	<b>1.00%</b>

# CITY SCHOOL DISTRICT OF ALBANY

## REVENUE SUMMARY

	<u>Budget</u> <u>2014-2015</u>	<u>Adopted Budget</u> <u>2015-2016</u>
<b>Property Taxes:</b>		
Real Property Taxes	\$ 102,557,537	\$ 103,659,129
Star Reimbursement on School Tax	10,339,973	10,339,973
<b>Local:</b>		
Payment in Lieu of Taxes	6,196,300	6,346,300
Interest & Penalties on Prop Taxes	1,000,000	1,000,000
Tax on Consumers Utility	4,200,000	4,300,000
Adult & Day School Tuitions	968,000	831,000
Health Services Other Districts	950,000	1,000,000
Interest and Earnings	67,000	11,600
Rental of Real Prop - Other Gov	21,000	21,000
Reimbursement of Medicare Part D	300,000	300,000
Refunds & Rebates	990,000	1,040,000
Other Unclassified Revenue	70,000	70,000
Interfund Revenues	150,000	150,000
Rail Infrastructure Investment Act	-	-
Miscellaneous Items	42,100	40,100
<b>Federal Aid:</b>		
E Rate	260,000	186,000
Medicaid Assistance	350,000	500,000
<b>State Aid:</b>		
Foundation Aid	44,801,658	49,324,090
Charter School Aid	1,623,908	135,090
Academic Enhancement Aid	1,247,799	1,247,799
Private Excess Cost	4,387,227	4,670,581
Public Excess Cost/High Cost Excess Cost	1,986,045	2,120,414
Building Aid	9,171,298	9,109,311
Transportation Aid	5,369,342	5,718,859
Lottery Aid	11,500,000	11,500,000
BOCES Aid-Special Services Aid	4,898,840	5,334,984
Tuition Aided Handicapped		
Textbook Aid	702,890	702,462
Computer Software	203,548	206,244
Hardware and Technology	215,165	225,796
Library AV Loan Program	83,018	86,050
Other State Aid	-	-
Federal Fiscal Stabilization	-	-
Subtotal before Fund Balance Appropriation	<u>\$ 214,652,648</u>	<u>\$ 220,176,782</u>
Appropriated Fund Balance	5,000,000	3,295,000
Use of Reserves	2,100,000	500,000
Total Revenues	<u><u>\$ 221,752,648</u></u>	<u><u>\$ 223,971,782</u></u>

City School District of Albany  
Property Tax Report Card

The property tax report card for the City School District of Albany is as follows:

	Budget 2014-15 (A)	Budget 2015-16 (B)		Percent Change (C)
Total Spending	221,752,648	223,971,782		1.00%
Proposed School Year Tax Levy (including Permissible Exclusions to the School Tax Levy Limit	112,897,510	113,999,102	*	0.98%
Permissible Exclusions to the School Tax Levy Limit	5,001,413	5,519,468		
Proposed School Year Tax Levy (not including Permissible Exclusions to the School Tax Levy Limit)	107,896,097	108,479,634		
School Tax Levy Limit	107,972,787	109,927,100		
Public School Enrollment	10,870	11,160		2.67%
Consumer Price Index				1.62%

\*If the Proposed School Year Tax Levy in 2015-16 (including Permissible Exclusions to the School Tax Levy Limit in 2015-16) exceeds the sum of the School Tax Levy Limit for 2015-16 and Permissible Exclusions to the School Tax Levy Limit in 2015-16, approval of 60% or more of the qualified voters present and voting is required.

	Actual 2014-15 (D)	Estimated 2015-16 (E)
Adjusted Restricted Fund Balance	18,487,572	14,483,592
Assigned Appropriated Fund Balance	5,000,000	3,295,000
Adjusted Unrestricted Fund Balance	10,313,204	9,143,340
Adjusted Unrestricted Fund Balance as a Percent of the Total Budget	4.65%	4.08%

Salary: Administrative Compensation Information 2014-2015 - Page 1  
 010100 - ALBANY CITY SD Official - as of 04/27/2015 09:03 AM

Form Due May 11,2015

2015-2016 Salary Threshold = \$130,000

In response to legislative efforts to encourage greater cost sharing in service provision and local government administration, we now provide a section for districts that share administrative staff to highlight these efforts for the upcoming school year. Each sharing district should identify in the form the other district(s) with which they will be sharing administrative staff for school year 2015-2016.

If you will be sharing a Superintendent, list the other district (or districts) in the text box. If you will be sharing other administrative staff required to be reported, please send an email to [EMSCMGTS@nysed.gov](mailto:EMSCMGTS@nysed.gov) indicating the title of the staff persons(s) as well as the other district(s) involved in the cost-sharing.

The salaries, benefits and other compensation reported in the form should reflect only the financial support or commitment that your district will be making. They should **not** reflect the total amounts budgeted to be paid by all participating districts over the school year.

Report Estimated Salaries in the Budget for the 2015-2016 School Year

Sections 1608 and 1716 of the Education Law  
 (Please read the instructions and definitions before completing this form.)

Title	Salary	Employee Benefits	Other Remuneration
1. Superintendent of Schools	193,800	50,369	0

Please list the district or districts with which you will be sharing a superintendent (if applicable):

Associate, Assistant and Deputy Superintendents

(Example Titles: Associate Superintendent for Instruction, Deputy Superintendent, Assistant Superintendent for Business, etc.)

2.	ASSISTANT SUPERINTENDENT FOR BUSINES	165,424	50,162	0
3.	ASSISTANT SUPERINTENDENT FOR CURRICL	124,909	40,302	0
4.	ASSISTANT SUPERINTENDENT FOR CURRICL	111,316	38,303	0
5.				
6.				
7.				
8.				
9.				
10.				
11.				
12.				
13.				
14.				
15.				
16.				
17.				
18.				
19.				
20.				
21.				
22.				
23.				
24.				
25.				
26.				
27.				
28.				
29.				
30.				
31.				

**Salary: Administrative Compensation Information 2014-2015 - Page 3**  
**010100 - ALBANY CITY SD Official - as of 04/27/2015 09:03 AM**

Other Supervisory and Administrative Employees Scheduled to Receive \$130,000 or More in Salary

71.	PRINCIPAL ALBANY HIGH SCHOOL	134,395
72.	PRINCIPAL ABROOKIN VO-TECH CENTER	136,678
73.	PRINCIPAL MYERS MIDDLE SCHOOL	136,678
74.	PRINCIPAL ARBOR HILL ELEMENTARY	132,345
75.	PRINCIPAL NEW SCOTLAND ELEMENTARY	132,345
76.	DIRECTOR OF SPECIAL EDUCATION	138,126
77.	DIRECTOR OF HEALTH & PHYSICAL EDUCATION	138,126
78.	SCHOOL IMPROVEMENT DIRECTOR	138,126
79.		
80.		
81.		
82.		
83.		
84.		
85.		
86.		
87.		
88.		
89.		
90.		
91.		
92.		
93.		
94.		
95.		
96.		
97.		
98.		
99.		
100.		
101.		
102.		
103.		
104.		
105.		
106.		
107.		
108.		
109.		
110.		
111.		
112.		

Equalized Total Assessed Value 11,663,925,805

Exemption Code	Exemption Name	Statutory Authority	Number of Exemptions	Total Equalized Value of Exemptions	Percent of Value Exempted
12100	NYS - GENERALLY	RPTL 404(1)	177	3,973,501,560	34.07
12200	NYS TEACHERS RETIREMENT SYSTI	RPTL 404(3)	5	30,661,909	0.26
12350	PUBLIC AUTHORITY - STATE	RPTL 412	2	25,792,439	0.22
12360	NYS ENVIRON'L FACILITIES CORP	RPTL 412	26	32,884,959	0.28
12370	STATE AUTHORITIES SPECIFIED	RPTL 412	3	9,000,662	0.08
12380	CENTRAL N Y REGIONAL TRANSP AL	RPTL 412	51	10,562,193	0.09
13100	CO - GENERALLY	RPTL 406(1)	189	116,675,571	1.00
13110	CO - CEMETERY LAND	RPTL 446	8	47,203,403	0.40
13350	CITY - GENERALLY	RPTL 406(1)	560	335,566,257	2.88
13500	TOWN - GENERALLY	RPTL 406(1)	3	35,822	0.00
13800	SCHOOL DISTRICT	RPTL 408	35	110,812,193	0.95
13890	PUBLIC AUTHORITY - LOCAL	RPTL 412	12	2,743,384	0.02
13970	REGIONAL OTB CORPORATION	RACING L 513	1	3,308,129	0.03
14000	LOCAL AUTHORITIES SPECIFIED	RPTL 412	23	19,657,505	0.17
14100	USA - GENERALLY	RPTL 400(1)	26	124,105,829	1.06
14110	USA - SPECIFIED USES	STATE L 54	5	31,678,733	0.27
18020	MUNICIPAL INDUSTRIAL DEV AGENC	RPTL 412-a	76	162,573,187	1.39
18040	URBAN REN: OWNER-MUNICIPALITY	GEN MUNY 506	219	345,721,661	2.96
18060	URBAN REN: OWNER-MUN U R AGEN	GEN MUNY 555 & 560	82	1,424,839	0.01
18180	UDC OWNED NON-HOUSING PROJE	MC K UCON L 6272	2	9,842,250	0.08
21600	RES OF CLERGY - RELIG CORP OWN	RPTL 462	3	920,888	0.01
25110	NONPROF CORP - RELIG(CONST PR)	RPTL 420-a	352	143,990,386	1.23
25120	NONPROF CORP - EDUCL(CONST PR	RPTL 420-a	217	321,799,915	2.76
25130	NONPROF CORP - CHAR (CONST PR	RPTL 420-a	135	40,113,705	0.34
25210	NONPROF CORP - HOSPITAL	RPTL 420-a	48	660,663,658	5.66
25230	NONPROF CORP - MORAL/MENTAL II	RPTL 420-a	494	144,073,574	1.24
25300	NONPROF CORP - SPECIFIED USES	RPTL 420-b	28	11,616,446	0.10

Equalized Total Assessed Value 11,663,925,805

Exemption Code	Exemption Name	Statutory Authority	Number of Exemptions	Total Equalized Value of Exemptions	Percent of Value Exempted
25400	FRATERNAL ORGANIZATION	RPTL 428	1	1,156,049	0.01
25900	SYSTEM CODE	STATUTORY AUTH NOT DEFINED	121	945,652	0.01
26100	VETERANS ORGANIZATION	RPTL 452	10	1,775,709	0.02
26250	HISTORICAL SOCIETY	RPTL 444	7	1,280,340	0.01
26400	INC VOLUNTEER FIRE CO OR DEPT	RPTL 464(2)	1	128,922	0.00
28520	NOT-FOR-PROFIT NURSING HOME C	RPTL 422	20	169,093,478	1.45
29350	TRUSTEES - HOSP, LIB, PLAYGROU	RPTL 438	13	15,284,877	0.13
41001	VETERANS EXEMPTION INCR/DECR	RPTL 458(5)	183	7,950,710	0.07
41123	ALT VET EX-WAR PERIOD-NON-COM	RPTL 458-a	862	21,022,922	0.18
41133	ALT VET EX-WAR PERIOD-COMBAT	RPTL 458-a	876	35,228,340	0.30
41143	ALT VET EX-WAR PERIOD-DISABILI	RPTL 458-a	175	6,259,770	0.05
41300	PARAPLEGIC VETS	RPTL 458(3)	1	185,350	0.00
41400	CLERGY	RPTL 460	30	71,285	0.00
41800	PERSONS AGE 65 OR OVER	RPTL 467	1,352	74,389,626	0.64
41801	PERSONS AGE 65 OR OVER	RPTL 467	6	283,684	0.00
41930	DISABILITIES AND LIMITED INCOM	RPTL 459-c	89	5,195,326	0.04
41963	HISTORIC PROPERTY	RPTL 444-a	11	642,760	0.01
41980	LOW OR MODERATE INCOME HOUSI	RPTL 421-e	73	4,070,049	0.03
47590	MIXED-USE PROPERTIES IN CERTAI	RPTL 485-a	36	12,402,745	0.11
47610	BUSINESS INVESTMENT PROPERTY	RPTL 485-b	1	233,932	0.00
47616	BUSINESS INVESTMENT PROPERTY	RPTL 485-b	1	1,849,093	0.02



Equalized Total Assessed Value 11,663,925,805

Exemption Code	Exemption Name	Statutory Authority	Number of Exemptions	Total Equalized Value of Exemptions	Percent of Value Exempted
47670	PROPERTY IMPRVMT IN EMPIRE ZC	RPTL 485-e	36	37,448,313	0.32
Total Exemptions Exclusive of System Exemptions:			6,687	7,113,829,989	60.99
Total System Exemptions:			0	0	0.00
Totals:			6,687	7,113,829,989	60.99

Values have been equalized using the Uniform Percentage of Value. The Exempt amounts do not take into consideration, payments in lieu of taxes or other payments for municipal services.

Amount, if any, attributable to payments in lieu of taxes: \_\_\_\_\_

## Fiscal Accountability Summary

Commissioner's Regulations require that certain expenditure ratios for general-education and special-education students be reported and compared with ratios for similar districts and all public schools. The required ratios for this district are reported below.

The numbers used to compute the statistics on this page were collected on the State Aid Form A, the State Aid Form F, the School District Annual Financial Report (ST-3), and from the Student Information Repository System (SIRS). These data are from the 2012-13 school year.

<b>This School District</b>	<b>General Education</b>	<b>Special Education</b>
<b>Instructional Expenditures</b>	\$126,087,508	\$49,628,536
<b>Pupils</b>	10,246	1,507
<b>Expenditures Per Pupil</b>	\$12,306	\$32,932
<b>Similar District Group (Urban-Suburban High Needs)</b>	<b>General Education</b>	<b>Special Education</b>
<b>Instructional Expenditures</b>	\$2,254,313,332	\$960,015,132
<b>Pupils</b>	205,070	32,489
<b>Expenditures Per Pupil</b>	\$10,993	\$29,549
<b>All School Districts</b>	<b>General Education</b>	<b>Special Education</b>
<b>Instructional Expenditures</b>	\$30,025,916,685	\$12,279,242,539
<b>Pupils</b>	2,666,629	410,379
<b>Expenditures Per Pupil</b>	\$11,260	\$29,922

Instructional Expenditures for General Education are K-12 expenditures for classroom instruction (excluding Special Education) plus a proration of building level administrative and instructional support expenditures. These expenditures include amounts for instruction of students with disabilities in a general-education setting. District expenditures, such as transportation, debt service and district-wide administration are not included.

The pupil count for General Education is K-12 average daily membership plus K-12 pupils for whom the district pays tuition to another school district. This number represents all pupils, including those classified as having disabilities and those not classified, excluding only students with disabilities placed out of district. Pupils resident in the district but attending a charter school are included. For districts in which a county jail is located, this number includes incarcerated youth to whom the district must provide an education program.

Instructional Expenditures for Special Education are K-12 expenditures for students with disabilities (including summer special education expenditures) plus a proration of building-level administrative and instructional support expenditures. District expenditures, such as transportation, debt service and district-wide administration are not included.

The pupil count for Special Education is a count of K-12 students with disabilities for the 2012-13 school year plus students for whom the district receives tuition from another district plus students for whom the district pays tuition to another district. Students attending the State schools at Rome and Batavia, private placements and out-of-state placements are included.

Instructional Expenditures Per Pupil is the simple arithmetic ratio of Instructional Expenditures to Pupils. The total cost of instruction for students with disabilities may include both general- and special-education expenditures. Special-education services provided in the general-education classroom may benefit students not classified as having disabilities.

### Total Expenditures Per Pupil

This School District	Similar District Group	NY State
<b>\$19,957</b>	<b>\$20,326</b>	<b>\$21,118</b>

Total Expenditures Per Pupil is the simple arithmetic ratio of Total Expenditures to Pupils. Total Expenditures include district expenditures for classroom instruction, as well as expenditures for transportation, debt service, community service and district-wide administration that are not included in the Instructional Expenditure values for General Education and Special Education. As such, the sum of General Education and Special Education Instructional Expenditures does not equal the Total Expenditures.

### Information about Students with Disabilities (2013 - 14)

Commissioner's Regulations require reporting students with disabilities by the percent of time they are in general education classrooms and the classification rate of students with disabilities. These data are to be compared with percentages for similar districts and all public schools. The required percentages for this district are reported below.

Student Placement (Percent of Time Inside Regular Classroom)	This School District		Similar District Group (Urban-Suburban High Needs)	NY State
	Number of Students	Percent of Students	Percent of Students	Percent of Students
80% or more	593	42.7%	47.6%	58.4%
40% - 79%	245	17.6%	18.3%	11.8%

<b>Less than 40%</b>	341	24.6%	25.0%	21.5%
<b>Separate Settings</b>	193	13.9%	6.0%	5.7%
<b>Other Settings</b>	17	1.2%	3.1%	2.5%

The source data for the statistics in this table were reported through the Student Information Repository System (SIRS) and verified in Verification Report 5. The counts are numbers of students reported in the least restrictive environment categories for school-age programs (ages 6-21) on BEDS Day, which is the first Wednesday of the reporting year. The percentages represent the amount of time students with disabilities are in general-education classrooms, regardless of the amount and cost of special-education services they receive. Rounding of percentage values may cause them to sum to a number slightly different from 100%.

### School-age Students with Disabilities Classification Rate

<b>This School District</b>	<b>Similar District Group</b>	<b>NY State</b>
<b>11.1%</b>	<b>12.7%</b>	<b>13.2%</b>

This rate is a ratio of the count of school-age students with disabilities (ages 4-21) to the total enrollment of all school-age students in the school district, including students who are parentally placed in nonpublic schools located in the school district. The numerator includes all school-age students for whom a district has Committee on Special Education (CSE) responsibility to ensure the provision of special-education services. The denominator includes all school-age students who reside in the district. In the case of parentally placed students in nonpublic schools, it includes the number of students who attend the nonpublic schools located in the school district. Source data are drawn from the SIRS and from the Basic Education Data System (BEDS).

Similar District Groups are identified according to the Need-to-Resource-Capacity Index. More information is available on our [NRC capacity categories](#) page.



## The New York State School Report Card [2013 - 14]

NAME: ALBANY CITY SCHOOL DISTRICT

BEDS Code: 010100010000

ADDRESS: ACADEMY PARK, ALBANY, NY 12207

PHONE: (518) 475-6010

The New York State Report Card is an important part of the Board of Regents' effort to raise learning standards for all students. It provides information to the public on school/district enrollment and staff, student performance, and other measures of school and district performance. Knowledge gained from the report card on a school's or district's strengths and weaknesses can be used to improve instruction and services to students.

## ALBANY CITY SCHOOL DISTRICT Enrollment (2013 - 14)

K-12 Enrollment: 8,272

These enrollment data are collected as part of NYSED's Student Information Repository System (SIRS). These counts are as of "BEDS Day" which is typically the first Wednesday in October. Available are enrollment counts for public and charter school students by various demographics for the 2013 - 14 school year. For nonpublic school enrollment data please see the [Non-Public School Enrollment and Staff](#) information on our Information and Reporting Services webpage

### Students by Gender

Male		Female	
4,219	51%	4,053	49%

### Students by Ethnicity

American Indian or Alaska Native	Black or African American	Hispanic or Latino	Asian or Native Hawaiian/Other Pacific Islander	White	Multiracial
30	4,178	1,294	746	1,708	316
0%	51%	16%	9%	21%	4%

### Other Groups

Limited English Proficient Students		Students with Disabilities		Economically Disadvantaged Students	
719	9%	1,169	14%	5,994	72%

### Students by Grade

Pre-K (Full Day)	Kindergarten (Full Day)	1st Grade	2nd Grade	3rd Grade	4th Grade
581	783	758	714	659	622
5th Grade	6th Grade	Ungraded Elementary	7th Grade	8th Grade	9th Grade
619	556	68	596	610	675
10th Grade	11th Grade	12th Grade	Ungraded Secondary		
565	486	474	87		

**Average Class Size (2013 - 14)**

Common Branch			
22			
Grade 8 English	Grade 8 Mathematics	Grade 8 Science	Grade 8 Social Studies
21	22	23	23
Grade 10 English	Grade 10 Mathematics	Grade 10 Science	Grade 10 Social Studies
22	20	24	22

**Free and Reduced-Price Lunch (2013 - 14)**

Eligible for Free Lunch		Eligible for Reduced-Price Lunch	
5,652	68%	342	4%

**Attendance and Suspensions (2012 - 13)**

Annual Attendance Rate	Student Suspensions	
93%	1,292	16%

**Teacher Turnover Rate (2012 - 13)**

Turnover Rate of Teachers with Fewer Than Five Years of Experience	Turnover Rate of All Teachers
19%	16%

**Staff Counts (2013 - 14)**

Principals	Assistant Principals	Other Professional Staff	Paraprofessionals
16	8	172	173

**Teacher Qualifications (2011-12 through 2013-14)**

	2011 - 12	2012 - 13	2013 - 14
<b>Total Number of Teachers</b>	652	655	650
<b>Percent with No Valid Teaching Certificate</b>	0%	0%	0%
<b>Percent Teaching Out of Certification</b>	1%	2%	1%
<b>Percent with Fewer Than Three Years of Experience</b>	2%	3%	4%
<b>Percentage with Master's Degree Plus 30 Hours or Doctorate</b>	12%	13%	14%
<b>Total Number of Core Classes</b>	1,374	1,416	1,353
<b>Percent Not Taught by Highly Qualified Teachers in This District</b>	0%	2%	0%
<b>Percent Not Taught by Highly Qualified Teachers Statewide</b>	2%	3%	4%
<b>Percent Not Taught by Highly Qualified Teachers in High-Poverty Schools Statewide</b>	4%	6%	9%
<b>Percent Not Taught by Highly Qualified Teachers in Low-Poverty Schools Statewide</b>	1%	1%	1%
<b>Total Number of Classes</b>	1,981	2,097	1,996
<b>Percent Taught by Teachers Without Appropriate Certification</b>	2%	2%	1%



### High School Completers (2013 - 14)

Results by Student Group	Completers (Graduates + IEP Diplomas)	Graduates (Regents + Local Diplomas)	Regents Diploma		Regents with Advanced Designation	
	Number of Students	Number of Students	Number of Students	Percent of Graduates	Number of Students	Percent of Graduates
All Students	410	370	327	88%	63	17%
General Education	324	324	314	97%	61	19%
Students with Disabilities	86	46	13	28%	2	4%
Results by Student Group	Regents with CTE Endorsement		Local Diplomas		Commencement Credentials	
	Number of Students	Percent of Graduates	Number of Students	Percent of Graduates	Number of Students	Percent of Completers
All Students	0	0%	43	12%	40	10%
General Education	0	0%	10	3%	0	0%
Students with Disabilities	0	0%	33	72%	40	47%

**High School Non-completers (2013 - 14)**

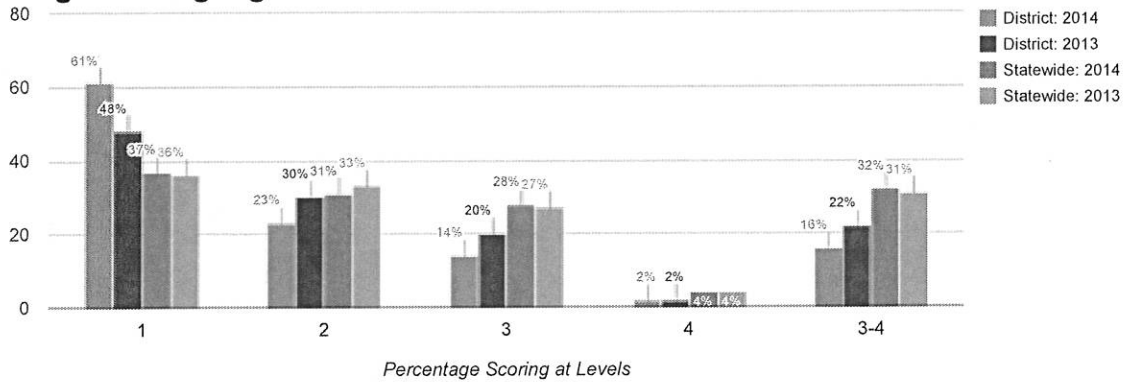
Results by Student Group	Dropped Out		Entered Approved High School Equivalency Preparation Program		Total Noncompleters	
	Number of Students	Percent of Students	Number of Students	Percent of Students	Number of Students	Percent of Students
All Students	239	11%	0	0%	239	11%
General Education	186	10%	0	0%	186	10%
Students with Disabilities	53	14%	0	0%	53	14%

**Post-graduation Plans of Completers (2013 - 14)**

Results by Student Group	To Four-Year College		To Two-Year College		To Other Post-Secondary		To the Military	
	Number of Students	Percent of Completers	Number of Students	Percent of Completers	Number of Students	Percent of Completers	Number of Students	Percent of Completers
All Students	127	31%	190	46%	0	0%	7	2%
General Education	124	38%	162	50%	0	0%	5	2%
Students with Disabilities	3	3%	28	33%	0	0%	2	2%

Results by Student Group	To Employment		To Adult Services		To Other Known Plans		Plan Unknown	
	Number of Students	Percent of Completers	Number of Students	Percent of Completers	Number of Students	Percent of Completers	Number of Students	Percent of Completers
All Students	29	7%	31	8%	4	1%	22	5%
General Education	14	4%	0	0%	1	0%	18	6%
Students with Disabilities	15	17%	31	36%	3	3%	4	5%

### Grade 3 English Language Arts

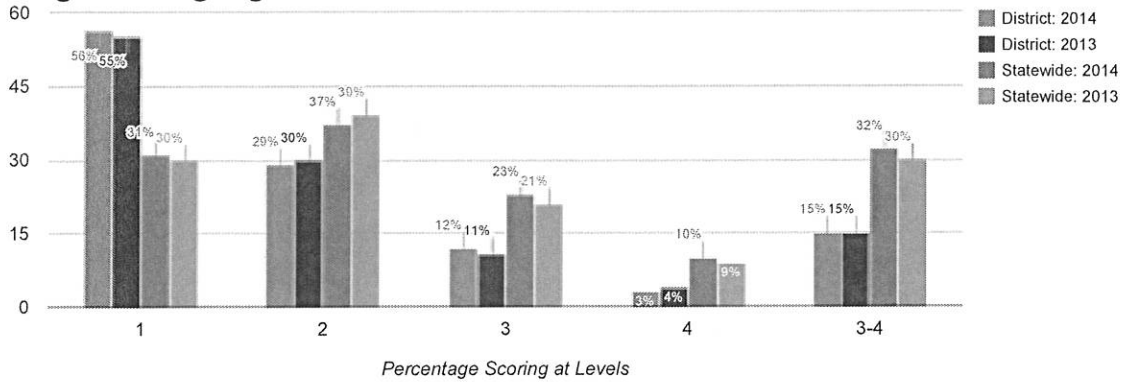


### Mean Score

2014	2013
276	290

Results by Student Group	2014						2013					
	Total Tested	Percent Scoring at Level(s)				% Proficient (Levels 3 and 4)	Total Tested	Percent Scoring at Level(s)				% Proficient (Levels 3 and 4)
		1	2	3	4			1	2	3	4	
All Students	654	61	23	14	2	16	615	48	30	20	2	22
General Education	592	58	25	15	2	17	552	44	32	22	3	24
Students with Disabilities	62	94	5	2	0	2	63	87	11	2	0	2
American Indian or Alaska Native	2	-	-	-	-	-	1	-	-	-	-	-
Asian or Native Hawaiian/Other Pacific Islander	46	46	20	28	7	35	48	35	42	19	4	23
Black or African American	350	69	21	9	0	9	315	57	30	12	1	13
Hispanic or Latino	97	73	19	7	1	8	97	54	29	16	1	18
White	135	36	31	28	5	33	133	30	26	38	6	44
Multiracial	24	-	-	-	-	-	21	-	-	-	-	-
Small Group Total	26	62	27	4	8	12	22	45	27	27	0	27
Female	317	53	28	16	3	19	291	41	30	25	4	29
Male	337	68	19	12	1	13	324	55	30	15	1	16
English Proficient	618	60	24	14	2	16	578	47	30	20	3	23
Limited English Proficient	36	78	14	6	3	8	37	70	24	5	0	5
Economically Disadvantaged	455	70	21	8	1	9	462	56	30	12	2	13
Not Economically Disadvantaged	199	40	28	28	5	32	153	24	29	42	5	48
Migrant	1	-	-	-	-	-	0	0	0	0	0	0
Not Migrant	653	-	-	-	-	-	615	48	30	20	2	22

### Grade 4 English Language Arts

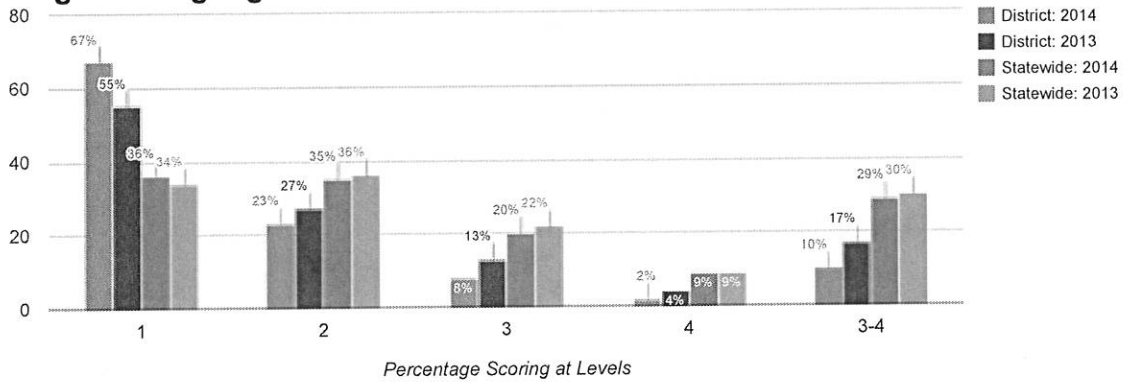


### Mean Score

2014	2013
278	279

Results by Student Group	2014						2013					
	Total Tested	Percent Scoring at Level(s)				% Proficient (Levels 3 and 4)	Total Tested	Percent Scoring at Level(s)				% Proficient (Levels 3 and 4)
		1	2	3	4			1	2	3	4	
All Students	599	56	29	12	3	15	652	55	30	11	4	15
General Education	535	52	32	13	3	17	551	48	34	13	5	17
Students with Disabilities	64	92	6	2	0	2	101	95	5	0	0	0
American Indian or Alaska Native	1	-	-	-	-	-	3	-	-	-	-	-
Asian or Native Hawaiian/Other Pacific Islander	53	42	38	17	4	21	48	40	35	23	2	25
Black or African American	305	65	27	8	0	9	357	66	27	6	1	7
Hispanic or Latino	104	63	30	6	2	8	100	60	32	6	2	8
White	112	34	30	25	11	36	133	29	33	26	13	38
Multiracial	24	-	-	-	-	-	11	-	-	-	-	-
Small Group Total	25	52	24	20	4	24	14	71	29	0	0	0
Female	288	48	32	15	5	20	331	51	30	13	5	19
Male	311	63	26	9	1	11	321	60	30	8	2	11
English Proficient	558	55	29	13	3	16	616	53	31	12	4	16
Limited English Proficient	41	71	29	0	0	0	36	92	8	0	0	0
Economically Disadvantaged	426	66	26	8	0	8	514	64	28	7	1	8
Not Economically Disadvantaged	173	31	36	24	9	33	138	24	38	25	13	38
Migrant	2	-	-	-	-	-	0	0	0	0	0	0
Not Migrant	597	-	-	-	-	-	652	55	30	11	4	15

### Grade 5 English Language Arts

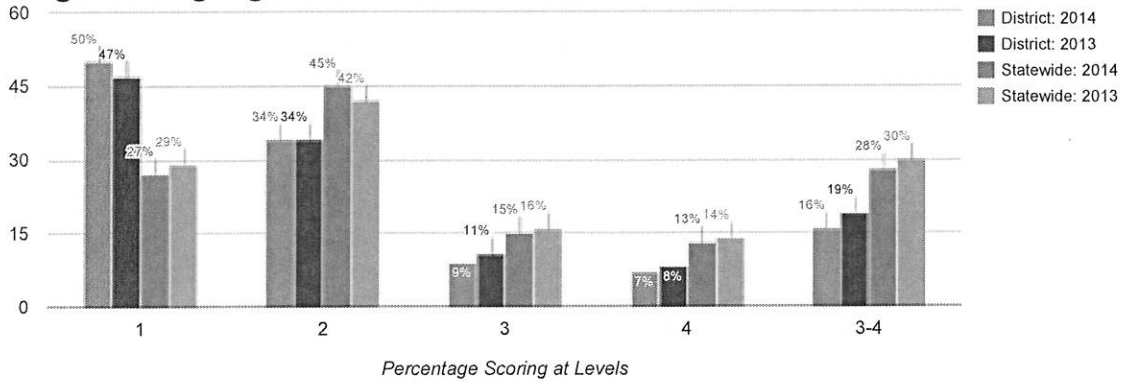


### Mean Score

2014	2013
270	284

Results by Student Group	2014						2013					
	Total Tested	Percent Scoring at Level(s)				% Proficient (Levels 3 and 4)	Total Tested	Percent Scoring at Level(s)				% Proficient (Levels 3 and 4)
		1	2	3	4			1	2	3	4	
All Students	610	67	23	8	2	10	595	55	27	13	4	17
General Education	513	61	27	10	3	12	513	50	31	15	5	20
Students with Disabilities	97	97	3	0	0	0	82	91	6	1	1	2
American Indian or Alaska Native	2	-	-	-	-	-	3	-	-	-	-	-
Asian or Native Hawaiian/Other Pacific Islander	46	48	35	15	2	17	51	37	25	29	8	37
Black or African American	346	77	19	2	1	4	320	66	24	8	2	10
Hispanic or Latino	96	68	26	5	1	6	81	57	28	11	4	15
White	109	40	28	27	6	32	122	35	33	21	11	32
Multiracial	11	-	-	-	-	-	18	-	-	-	-	-
Small Group Total	13	62	31	8	0	8	21	52	38	10	0	10
Female	310	61	25	11	3	14	296	51	28	15	6	21
Male	300	72	21	5	2	7	299	60	26	11	3	14
English Proficient	572	65	24	9	2	11	555	53	28	14	5	19
Limited English Proficient	38	84	16	0	0	0	40	83	18	0	0	0
Economically Disadvantaged	441	76	20	4	0	4	446	64	26	8	2	10
Not Economically Disadvantaged	169	41	33	19	8	27	149	28	32	28	12	40
Migrant	1	-	-	-	-	-	0	0	0	0	0	0
Not Migrant	609	-	-	-	-	-	595	55	27	13	4	17

### Grade 6 English Language Arts

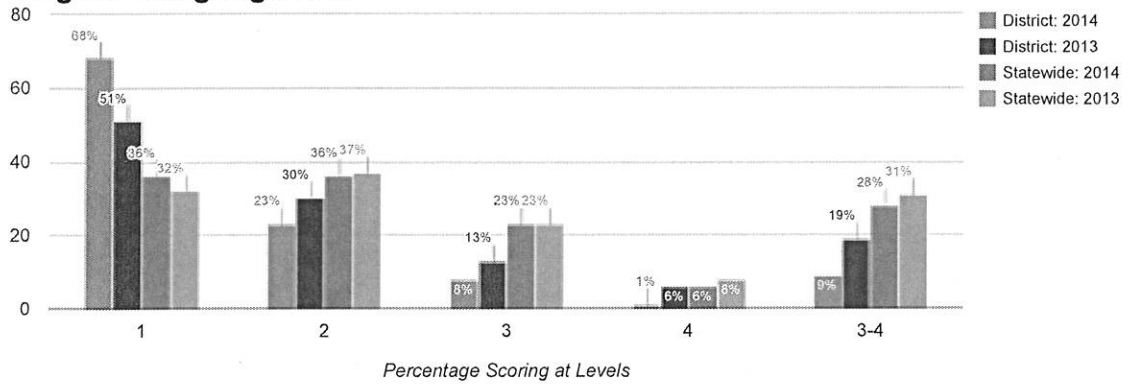


### Mean Score

2014	2013
281	284

Results by Student Group	2014						2013					
	Total Tested	Percent Scoring at Level(s)				% Proficient (Levels 3 and 4)	Total Tested	Percent Scoring at Level(s)				% Proficient (Levels 3 and 4)
		1	2	3	4			1	2	3	4	
All Students	532	50	34	9	7	16	563	47	34	11	8	19
General Education	463	46	37	11	7	18	478	40	38	12	9	21
Students with Disabilities	69	81	17	0	1	1	85	86	9	2	2	5
American Indian or Alaska Native	3	-	-	-	-	-	2	-	-	-	-	-
Asian or Native Hawaiian/Other Pacific Islander	51	37	31	16	16	31	56	54	25	9	13	21
Black or African American	284	60	30	6	4	10	300	55	37	6	3	8
Hispanic or Latino	70	54	36	6	4	10	86	53	28	14	5	19
White	104	26	42	18	13	32	112	21	34	22	22	45
Multiracial	20	-	-	-	-	-	7	-	-	-	-	-
Small Group Total	23	52	48	0	0	0	9	22	56	22	0	22
Female	266	45	35	12	8	20	249	33	43	13	11	24
Male	266	55	33	7	5	12	314	59	27	9	5	14
English Proficient	492	48	36	10	7	17	525	44	36	12	8	20
Limited English Proficient	40	83	15	0	3	3	38	87	13	0	0	0
Economically Disadvantaged	397	59	32	7	3	9	423	54	35	8	3	11
Not Economically Disadvantaged	135	25	40	16	19	35	140	26	31	21	22	43
Migrant	3	-	-	-	-	-	2	-	-	-	-	-
Not Migrant	529	-	-	-	-	-	561	-	-	-	-	-

### Grade 7 English Language Arts



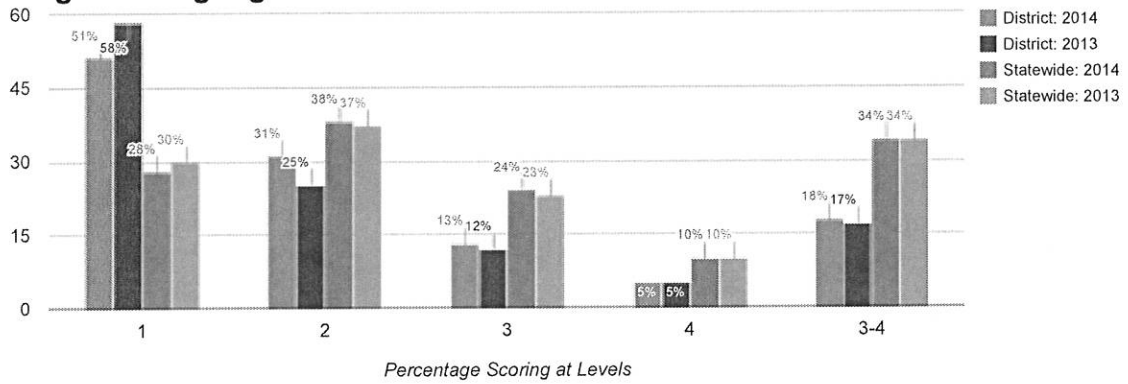
### Mean Score

2014	2013
269	284

Results by Student Group	2014						2013					
	Total Tested	Percent Scoring at Level(s)				% Proficient (Levels 3 and 4)	Total Tested	Percent Scoring at Level(s)				% Proficient (Levels 3 and 4)
		1	2	3	4			1	2	3	4	
All Students	583	68	23	8	1	9	559	51	30	13	6	19
General Education	500	62	27	9	1	11	454	42	35	16	7	23
Students with Disabilities	83	99	1	0	0	0	105	91	8	1	0	1
American Indian or Alaska Native	1	-	-	-	-	-	3	-	-	-	-	-
Asian or Native Hawaiian/Other Pacific Islander	62	68	24	6	2	8	33	27	21	39	12	52
Black or African American	318	75	20	4	0	5	314	56	33	10	1	11
Hispanic or Latino	89	65	26	8	1	9	87	63	26	8	2	10
White	104	44	32	21	3	24	113	33	27	20	19	40
Multiracial	9	-	-	-	-	-	9	-	-	-	-	-
Small Group Total	10	80	20	0	0	0	12	75	17	8	0	8
Female	272	59	29	10	1	12	273	43	33	16	7	24
Male	311	75	18	6	1	7	286	59	27	10	4	14
English Proficient	539	65	25	9	1	10	538	50	30	14	6	20
Limited English Proficient	44	95	5	0	0	0	21	86	14	0	0	0
Economically Disadvantaged	451	75	22	3	0	4	437	57	31	10	2	12
Not Economically Disadvantaged	132	42	30	24	4	28	122	29	26	25	20	45
Migrant	3	-	-	-	-	-	0	0	0	0	0	0
Not Migrant	580	-	-	-	-	-	559	51	30	13	6	19



### Grade 8 English Language Arts

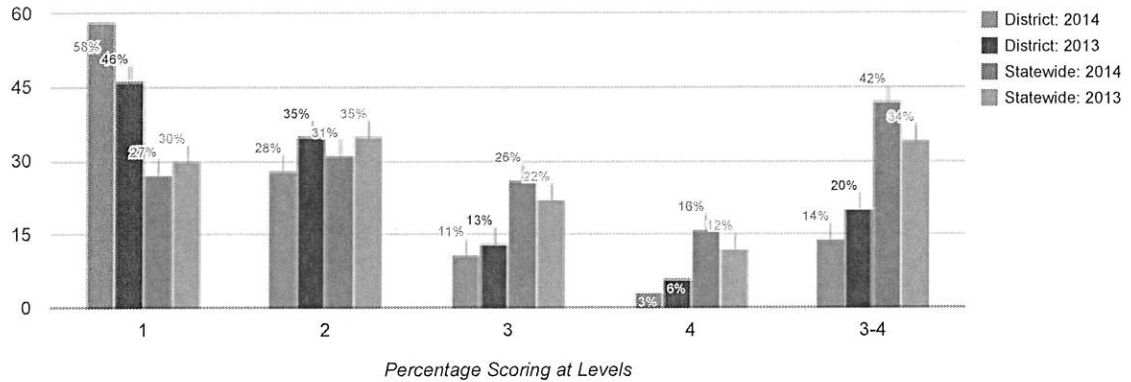


### Mean Score

2014	2013
281	276

Results by Student Group	2014						2013					
	Total Tested	Percent Scoring at Level(s)				% Proficient (Levels 3 and 4)	Total Tested	Percent Scoring at Level(s)				% Proficient (Levels 3 and 4)
		1	2	3	4			1	2	3	4	
All Students	591	51	31	13	5	18	578	58	25	12	5	17
General Education	490	42	36	16	6	22	472	49	30	14	6	20
Students with Disabilities	101	91	8	1	0	1	106	94	3	3	0	3
American Indian or Alaska Native	3	-	-	-	-	-	2	-	-	-	-	-
Asian or Native Hawaiian/Other Pacific Islander	39	41	21	28	10	38	37	57	11	27	5	32
Black or African American	333	56	33	9	1	11	364	62	29	6	2	9
Hispanic or Latino	98	52	35	10	3	13	75	68	21	8	3	11
White	101	35	26	22	18	40	94	33	18	33	16	49
Multiracial	17	-	-	-	-	-	6	-	-	-	-	-
Small Group Total	20	45	35	15	5	20	8	38	38	13	13	25
Female	285	44	34	16	6	22	271	51	28	14	6	21
Male	306	57	29	10	4	15	307	64	22	10	4	14
English Proficient	561	48	32	14	5	19	542	55	27	13	5	18
Limited English Proficient	30	90	10	0	0	0	36	97	3	0	0	0
Economically Disadvantaged	453	58	30	10	1	11	463	62	27	10	2	11
Not Economically Disadvantaged	138	25	34	23	18	41	115	40	20	23	17	40
Not Migrant	591	51	31	13	5	18	578	58	25	12	5	17

### Grade 3 Mathematics

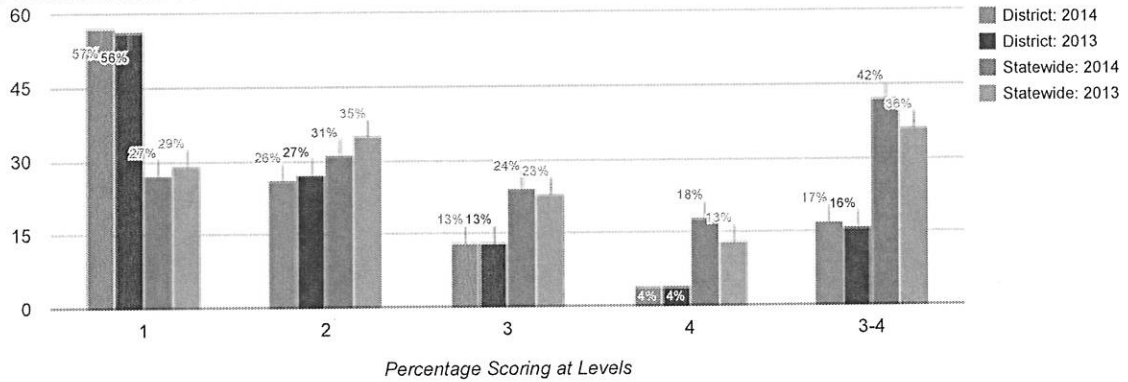


### Mean Score

2014	2013
276	287

Results by Student Group	2014						2013					
	Total Tested	Percent Scoring at Level(s)				% Proficient (Levels 3 and 4)	Total Tested	Percent Scoring at Level(s)				% Proficient (Levels 3 and 4)
		1	2	3	4			1	2	3	4	
All Students	656	58	28	11	3	14	627	46	35	13	6	20
General Education	596	55	30	12	4	16	562	43	36	14	7	22
Students with Disabilities	60	90	8	2	0	2	65	72	25	3	0	3
American Indian or Alaska Native	2	-	-	-	-	-	1	-	-	-	-	-
Asian or Native Hawaiian/Other Pacific Islander	50	32	30	30	8	38	56	27	43	20	11	30
Black or African American	347	69	24	6	1	6	316	55	33	11	1	12
Hispanic or Latino	96	67	26	6	1	7	100	52	33	10	5	15
White	137	34	34	23	9	32	133	26	37	19	18	37
Multiracial	24	-	-	-	-	-	21	-	-	-	-	-
Small Group Total	26	46	42	8	4	12	22	50	32	9	9	18
Female	323	58	28	10	3	14	292	43	35	14	9	22
Male	333	58	27	12	3	15	335	48	35	13	4	17
English Proficient	611	57	28	11	3	15	577	46	35	12	7	19
Limited English Proficient	45	64	22	11	2	13	50	44	32	22	2	24
Economically Disadvantaged	455	66	25	7	1	8	470	54	33	10	3	13
Not Economically Disadvantaged	201	39	32	21	8	29	157	20	39	22	18	40
Migrant	1	-	-	-	-	-	0	0	0	0	0	0
Not Migrant	655	-	-	-	-	-	627	46	35	13	6	20

### Grade 4 Mathematics

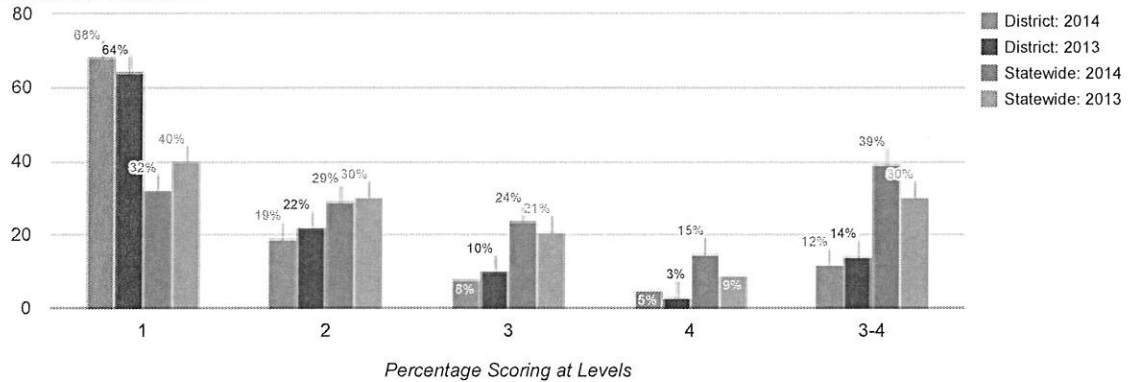


### Mean Score

2014	2013
274	278

Results by Student Group	2014						2013					
	Total Tested	Percent Scoring at Level(s)				% Proficient (Levels 3 and 4)	Total Tested	Percent Scoring at Level(s)				% Proficient (Levels 3 and 4)
		1	2	3	4			1	2	3	4	
All Students	605	57	26	13	4	17	656	56	27	13	4	16
General Education	539	53	28	14	5	19	557	51	30	15	4	19
Students with Disabilities	66	89	9	2	0	2	99	86	14	0	0	0
American Indian or Alaska Native	1	-	-	-	-	-	2	-	-	-	-	-
Asian or Native Hawaiian/Other Pacific Islander	56	41	41	11	7	18	49	27	35	33	6	39
Black or African American	307	66	23	10	1	10	357	68	25	6	1	7
Hispanic or Latino	104	67	22	10	1	11	102	68	24	7	2	9
White	114	32	31	24	13	37	135	27	32	28	13	41
Multiracial	23	-	-	-	-	-	11	-	-	-	-	-
Small Group Total	24	50	17	21	13	33	13	62	38	0	0	0
Female	291	54	27	15	4	20	333	55	29	13	4	17
Male	314	60	25	11	4	15	323	58	26	13	3	16
English Proficient	555	56	26	14	4	18	612	56	27	13	4	16
Limited English Proficient	50	68	28	2	2	4	44	57	27	14	2	16
Economically Disadvantaged	434	67	24	9	0	9	515	65	26	8	1	9
Not Economically Disadvantaged	171	32	32	23	13	37	141	24	33	30	13	43
Migrant	2	-	-	-	-	-	0	0	0	0	0	0
Not Migrant	603	-	-	-	-	-	656	56	27	13	4	16

### Grade 5 Mathematics

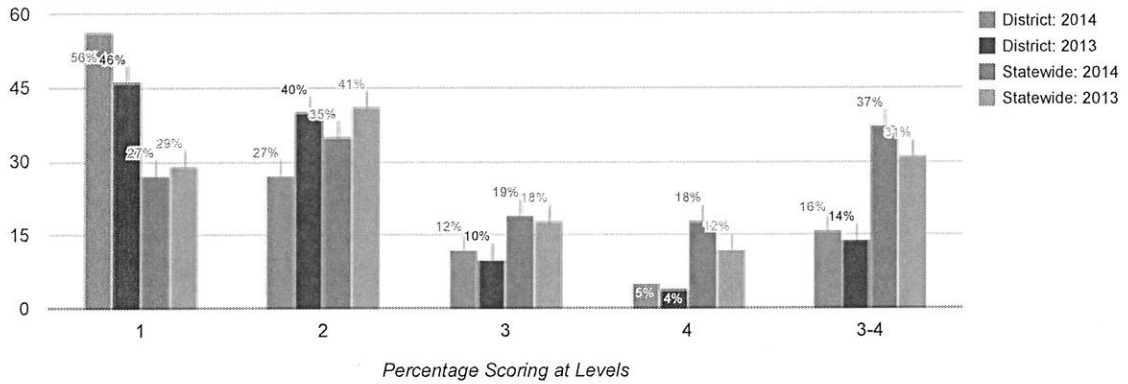


### Mean Score

2014	2013
276	281

Results by Student Group	2014						2013					
	Total Tested	Percent Scoring at Level(s)				% Proficient (Levels 3 and 4)	Total Tested	Percent Scoring at Level(s)				% Proficient (Levels 3 and 4)
		1	2	3	4			1	2	3	4	
All Students	578	68	19	8	5	12	602	64	22	10	3	14
General Education	483	62	23	9	6	15	518	59	25	12	3	15
Students with Disabilities	95	98	2	0	0	0	84	94	2	1	2	4
American Indian or Alaska Native	1	-	-	-	-	-	3	-	-	-	-	-
Asian or Native Hawaiian/Other Pacific Islander	47	47	30	15	9	23	53	40	30	25	6	30
Black or African American	317	79	17	3	1	3	319	74	20	4	1	5
Hispanic or Latino	91	69	19	11	1	12	84	69	18	10	4	13
White	111	44	21	17	18	35	125	42	27	22	8	30
Multiracial	11	-	-	-	-	-	18	-	-	-	-	-
Small Group Total	12	75	25	0	0	0	21	76	19	0	5	5
Female	293	65	23	8	5	13	302	61	25	11	3	15
Male	285	72	16	7	5	12	300	67	20	10	3	13
English Proficient	532	68	19	7	5	13	554	62	23	11	3	14
Limited English Proficient	46	70	20	11	0	11	48	83	10	4	2	6
Economically Disadvantaged	414	79	17	4	1	5	453	73	20	6	1	8
Not Economically Disadvantaged	164	42	26	17	15	32	149	38	30	23	9	33
Migrant	1	-	-	-	-	-	0	0	0	0	0	0
Not Migrant	577	-	-	-	-	-	602	64	22	10	3	14

### Grade 6 Mathematics

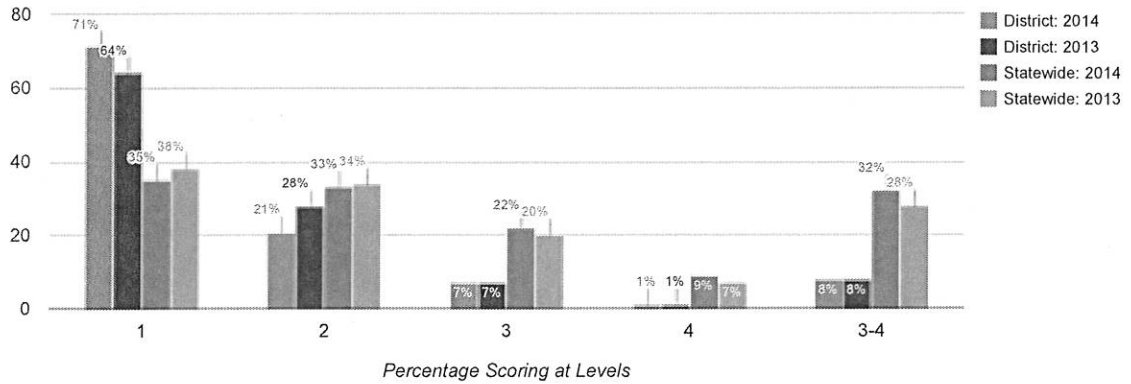


### Mean Score

2014	2013
276	285

Results by Student Group	2014						2013					
	Total Tested	Percent Scoring at Level(s)				% Proficient (Levels 3 and 4)	Total Tested	Percent Scoring at Level(s)				% Proficient (Levels 3 and 4)
		1	2	3	4			1	2	3	4	
All Students	539	56	27	12	5	16	575	46	40	10	4	14
General Education	469	52	30	13	5	18	490	41	44	11	5	15
Students with Disabilities	70	86	10	3	1	4	85	74	18	8	0	8
American Indian or Alaska Native	3	-	-	-	-	-	2	-	-	-	-	-
Asian or Native Hawaiian/Other Pacific Islander	55	40	31	16	13	29	62	29	50	11	10	21
Black or African American	288	64	26	9	1	10	303	55	37	7	1	8
Hispanic or Latino	68	66	24	6	4	10	87	52	38	7	3	10
White	109	38	32	20	10	30	114	25	44	21	10	31
Multiracial	16	-	-	-	-	-	7	-	-	-	-	-
Small Group Total	19	58	26	16	0	16	9	33	56	11	0	11
Female	263	55	27	12	5	17	253	42	41	13	5	18
Male	276	57	28	11	4	15	322	49	40	8	3	11
English Proficient	489	54	29	12	5	17	528	45	40	10	4	15
Limited English Proficient	50	78	10	8	4	12	47	47	43	9	2	11
Economically Disadvantaged	402	64	24	9	2	11	435	51	41	5	2	7
Not Economically Disadvantaged	137	32	36	20	11	31	140	27	36	26	10	36
Migrant	3	-	-	-	-	-	2	-	-	-	-	-
Not Migrant	536	-	-	-	-	-	573	-	-	-	-	-

### Grade 7 Mathematics

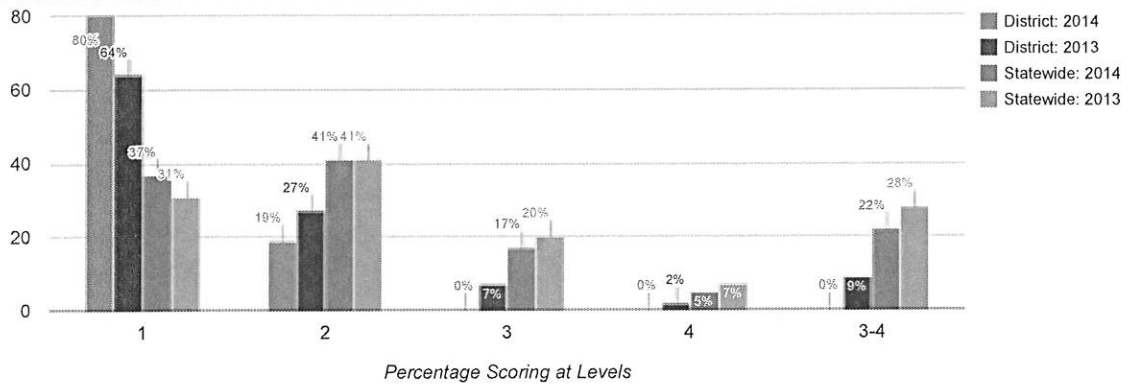


### Mean Score

2014	2013
274	279

Results by Student Group	2014						2013					
	Total Tested	Percent Scoring at Level(s)				% Proficient (Levels 3 and 4)	Total Tested	Percent Scoring at Level(s)				% Proficient (Levels 3 and 4)
		1	2	3	4			1	2	3	4	
All Students	581	71	21	7	1	8	560	64	28	7	1	8
General Education	500	67	24	9	1	10	457	58	32	9	1	10
Students with Disabilities	81	99	1	0	0	0	103	90	10	0	0	0
American Indian or Alaska Native	1	-	-	-	-	-	3	-	-	-	-	-
Asian or Native Hawaiian/Other Pacific Islander	65	42	45	11	3	14	34	38	44	18	0	18
Black or African American	308	82	15	3	0	3	315	74	23	2	0	3
Hispanic or Latino	88	80	14	7	0	7	88	74	25	0	1	1
White	108	47	31	19	3	22	111	33	40	23	4	27
Multiracial	11	-	-	-	-	-	9	-	-	-	-	-
Small Group Total	12	92	8	0	0	0	12	83	17	0	0	0
Female	272	67	24	8	1	9	275	62	29	8	0	8
Male	309	74	18	6	1	7	285	66	27	6	2	8
English Proficient	523	71	20	8	1	9	534	63	28	7	1	8
Limited English Proficient	58	74	26	0	0	0	26	73	23	4	0	4
Economically Disadvantaged	451	80	17	3	0	3	440	71	25	3	1	3
Not Economically Disadvantaged	130	39	35	22	4	26	120	37	38	23	3	26
Migrant	3	-	-	-	-	-	0	0	0	0	0	0
Not Migrant	578	-	-	-	-	-	560	64	28	7	1	8

### Grade 8 Mathematics

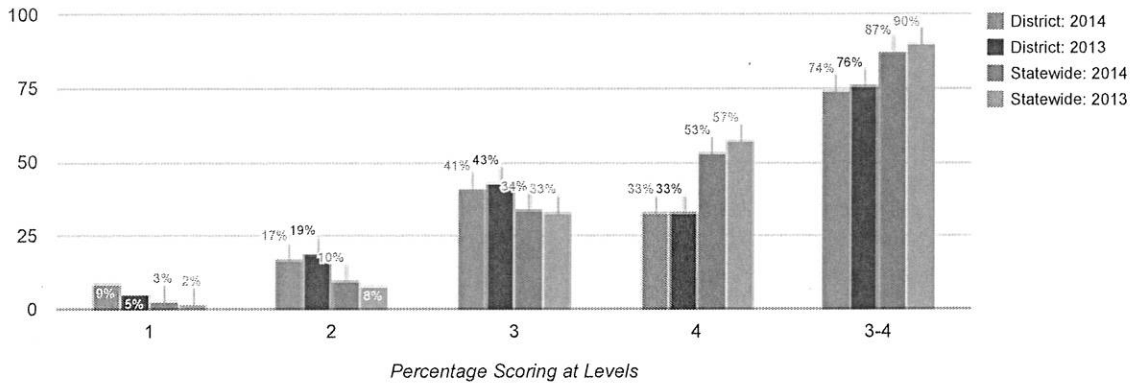


### Mean Score

2014	2013
259	273

Results by Student Group	2014						2013					
	Total Tested	Percent Scoring at Level(s)				% Proficient (Levels 3 and 4)	Total Tested	Percent Scoring at Level(s)				% Proficient (Levels 3 and 4)
		1	2	3	4			1	2	3	4	
All Students	469	80	19	0	0	0	577	64	27	7	2	9
General Education	373	76	24	1	0	1	472	58	32	8	2	10
Students with Disabilities	96	98	2	0	0	0	105	92	7	1	0	1
American Indian or Alaska Native	2	-	-	-	-	-	2	-	-	-	-	-
Asian or Native Hawaiian/Other Pacific Islander	24	79	21	0	0	0	42	57	29	12	2	14
Black or African American	287	83	17	0	0	0	359	71	25	4	1	4
Hispanic or Latino	87	76	24	0	0	0	76	72	21	7	0	7
White	55	71	27	2	0	2	94	34	41	17	7	24
Multiracial	14	-	-	-	-	-	4	-	-	-	-	-
Small Group Total	16	88	6	6	0	6	6	67	17	17	0	17
Female	221	83	17	0	0	0	269	59	31	8	1	10
Male	248	78	21	0	0	0	308	69	24	6	2	8
English Proficient	430	80	20	0	0	0	536	62	28	7	2	9
Limited English Proficient	39	85	15	0	0	0	41	88	12	0	0	0
Economically Disadvantaged	398	84	16	0	0	0	464	70	26	4	0	4
Not Economically Disadvantaged	71	61	38	1	0	1	113	41	33	19	7	27
Not Migrant	469	80	19	0	0	0	577	64	27	7	2	9

### Grade 4 Science



### Mean Score

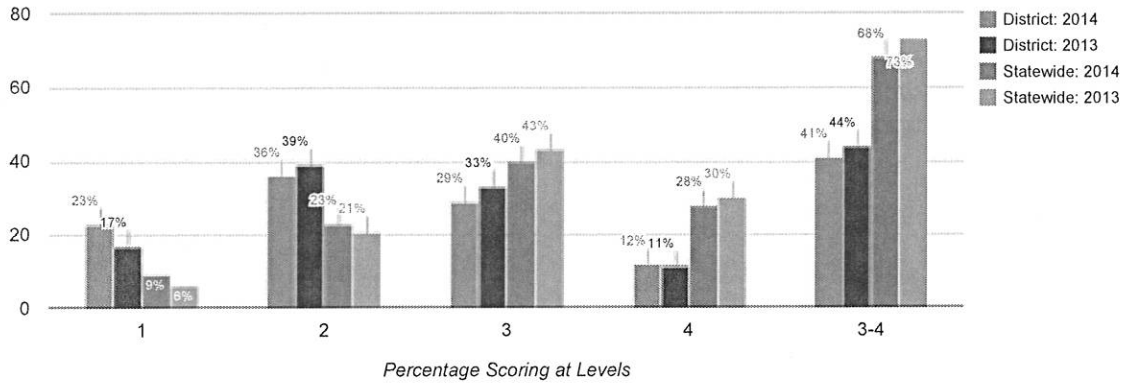
2014	2013
74	75

Results by Student Group	2014						2013					
	Total Tested	Percent Scoring at Level(s)				% Proficient (Levels 3 and 4)	Total Tested	Percent Scoring at Level(s)				% Proficient (Levels 3 and 4)
		1	2	3	4			1	2	3	4	
All Students	596	9	17	41	33	74	651	5	19	43	33	76
General Education	531	7	15	41	37	78	551	4	16	44	37	81
Students with Disabilities	65	23	35	37	5	42	100	14	35	41	10	51
American Indian or Alaska Native	1	-	-	-	-	-	3	-	-	-	-	-
Asian or Native Hawaiian/Other Pacific Islander	55	9	18	24	49	73	47	0	9	40	51	91
Black or African American	303	12	19	44	25	69	357	6	22	46	25	71
Hispanic or Latino	102	7	20	55	19	74	99	7	21	49	22	72
White	112	4	8	31	57	88	134	2	10	30	57	87
Multiracial	23	-	-	-	-	-	11	-	-	-	-	-
Small Group Total	24	4	25	25	46	71	14	7	21	57	14	71
Female	283	6	16	41	37	78	329	4	20	42	34	76
Male	313	11	19	41	30	70	322	7	17	44	31	76
English Proficient	548	8	17	41	35	76	608	5	18	43	34	77
Limited English Proficient	48	19	27	42	13	54	43	9	33	42	16	58
Economically Disadvantaged	426	11	21	44	24	68	514	6	22	48	25	73
Not Economically Disadvantaged	170	2	8	34	56	89	137	3	8	26	64	89
Migrant	2	-	-	-	-	-	0	0	0	0	0	0
Not Migrant	594	-	-	-	-	-	651	5	19	43	33	76



### Grade 8 Science

Data in the bar charts include those for grade 8 students who took the New York State Grade 8 Science Test and grade 8 students who took a Regents science test in lieu of this test. Mean scores and data in the table for grade 8 science include only those for grade 8 students who took the New York State Grade 8 Science Test.



### Mean Score

2014	2013
53	61

Results by Student Group	2014						2013					
	Total Tested	Percent Scoring at Level(s)				% Proficient (Levels 3 and 4)	Total Tested	Percent Scoring at Level(s)				% Proficient (Levels 3 and 4)
		1	2	3	4			1	2	3	4	
All Students	437	30	46	22	1	24	558	17	39	33	11	44
General Education	341	22	49	28	2	29	461	12	38	37	13	50
Students with Disabilities	96	58	38	4	0	4	97	40	44	13	2	15
American Indian or Alaska Native	2	-	-	-	-	-	2	-	-	-	-	-
Asian or Native Hawaiian/Other Pacific Islander	24	38	29	33	0	33	42	17	36	29	19	48
Black or African American	265	30	50	19	1	20	345	19	42	34	5	39
Hispanic or Latino	76	29	49	20	3	22	71	20	52	24	4	28
White	55	27	31	40	2	42	93	10	18	38	34	72
Multiracial	15	-	-	-	-	-	5	-	-	-	-	-
Small Group Total	17	29	53	18	0	18	7	0	57	29	14	43
Female	205	25	50	24	0	25	267	11	43	35	11	46
Male	232	34	43	21	2	23	291	22	36	31	11	42
English Proficient	399	28	48	23	2	24	517	16	38	34	12	46
Limited English Proficient	38	47	32	21	0	21	41	32	56	12	0	12
Economically Disadvantaged	368	32	48	20	1	21	445	18	44	33	5	38
Not Economically Disadvantaged	69	20	39	36	4	41	113	12	22	33	34	66
Not Migrant	437	30	46	22	1	24	558	17	39	33	11	44

**Grade 8 Students Taking a Regents Science Test**

Accelerated grade 8 students who take a Regents science test in lieu of the New York State Grade 8 Science Test.

Results by Student Group	2014					2013						
	Total Tested	Percent Scoring at Level(s)				% Proficient (Levels 3 and 4)	Total Tested	Percent Scoring at Level(s)				% Proficient (Levels 3 and 4)
		1	2	3	4			1	2	3	4	
All Students	141	1	5	48	46	94	0	0	0	0	0	0

**Recently Arrived LEP Students Taking NYSESLAT in Lieu of NYSTP: Grade 3**

2014	2013
8	13

**Recently Arrived LEP Students NOT Tested on the ELA NYSTP: Grade 3**

2014	2013
9	13

**Recently Arrived LEP Students Taking NYSESLAT in Lieu of NYSTP: Grade 4**

2014	2013
10	7

**Recently Arrived LEP Students NOT Tested on the ELA NYSTP: Grade 4**

2014	2013
10	7

**Recently Arrived LEP Students Taking NYSESLAT in Lieu of NYSTP: Grade 5**

2014	2013
8	7

**Recently Arrived LEP Students NOT Tested on the ELA NYSTP: Grade 5**

2014	2013
8	7

**Recently Arrived LEP Students Taking NYSESLAT in Lieu of NYSTP: Grade 6**

2014	2013
11	8

**Recently Arrived LEP Students NOT Tested on the ELA NYSTP: Grade 6**

2014	2013
11	8

**Recently Arrived LEP Students Taking NYSESLAT in Lieu of NYSTP: Grade 7**

2014	2013

13
----

5
---

**Recently Arrived LEP Students NOT Tested on the ELA NYSTP: Grade 7**

2014
------

2013
------

14
----

5
---

**Recently Arrived LEP Students Taking NYSESLAT in Lieu of NYSTP: Grade 8**

2014
------

2013
------

10
----

6
---

**Recently Arrived LEP Students NOT Tested on the ELA NYSTP: Grade 8**

2014
------

2013
------

10
----

6
---

## Statewide Results on the National Assessment of Educational Progress: NAEP (2012 - 13)

### NAEP Grade 4 Reading

	% Below Basic	% Basic	% Proficient	% Advanced
All Students	30	33	28	9
American Indian or Alaska Native	*	*	*	*
Asian or Native Hawaiian/Other Pacific Islander	19	27	36	18
Black or African American	45	34	18	3
Hispanic or Latino	44	35	17	4
White	20	33	35	12
Multiracial	*	*	*	*
Students with Disabilities	69	22	7	2
Limited English Proficient	75	21	4	*
Economically Disadvantaged	43	34	19	4

### NAEP Grade 4 Mathematics

	% Below Basic	% Basic	% Proficient	% Advanced
All Students	18	42	33	7
American Indian or Alaska Native	*	*	*	*
Asian or Native Hawaiian/Other Pacific Islander	6	25	48	21
Black or African American	33	50	16	1
Hispanic or Latino	27	49	22	2
White	9	41	42	8
Multiracial	*	*	*	*
Students with Disabilities	43	42	14	1
Limited English Proficient	54	36	10	*
Economically Disadvantaged	26	48	23	3

\*Reporting standards not met.

### Statewide Results on the National Assessment of Educational Progress: NAEP (2012 - 13)

#### NAEP Grade 8 Reading

	% Below Basic	% Basic	% Proficient	% Advanced
All Students	24	41	30	5
American Indian or Alaska Native	*	*	*	*
Asian or Native Hawaiian/Other Pacific Islander	17	33	38	12
Black or African American	37	45	17	1
Hispanic or Latino	36	45	18	1
White	14	40	40	6
Multiracial	*	*	*	*
Students with Disabilities	56	36	8	*
Limited English Proficient	80	19	1	*
Economically Disadvantaged	35	44	20	1

#### NAEP Grade 8 Mathematics

	% Below Basic	% Basic	% Proficient	% Advanced
All Students	28	40	24	8
American Indian or Alaska Native	*	*	*	*
Asian or Native Hawaiian/Other Pacific Islander	14	27	33	26
Black or African American	50	38	11	1
Hispanic or Latino	44	42	12	2
White	15	41	34	10
Multiracial	*	*	*	*
Students with Disabilities	66	27	6	1
Limited English Proficient	75	21	3	1
Economically Disadvantaged	42	39	15	4

\*Reporting standards not met.

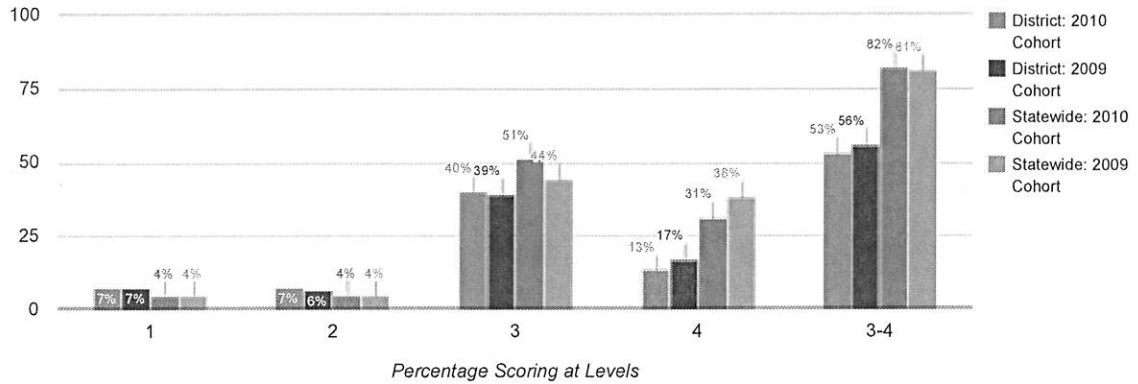
## Statewide Results on the National Assessment of Educational Progress: NAEP (2012 - 13)

### NAEP Participation Rates

<b>Grade 4 Reading</b>	<b>Participation Rate</b>
Students with Disabilities	94
Limited English Proficient	93
<b>Grade 4 Mathematics</b>	<b>Participation Rate</b>
Students with Disabilities	94
Limited English Proficient	93
<b>Grade 8 Reading</b>	<b>Participation Rate</b>
Students with Disabilities	97
Limited English Proficient	91
<b>Grade 8 Mathematics</b>	<b>Participation Rate</b>
Students with Disabilities	89
Limited English Proficient	94

### Total Cohort Results in Secondary-Level English Language Arts after Four Years of Instruction

Total cohort results are those for New York State Regents and alternatives to Regents examinations only.

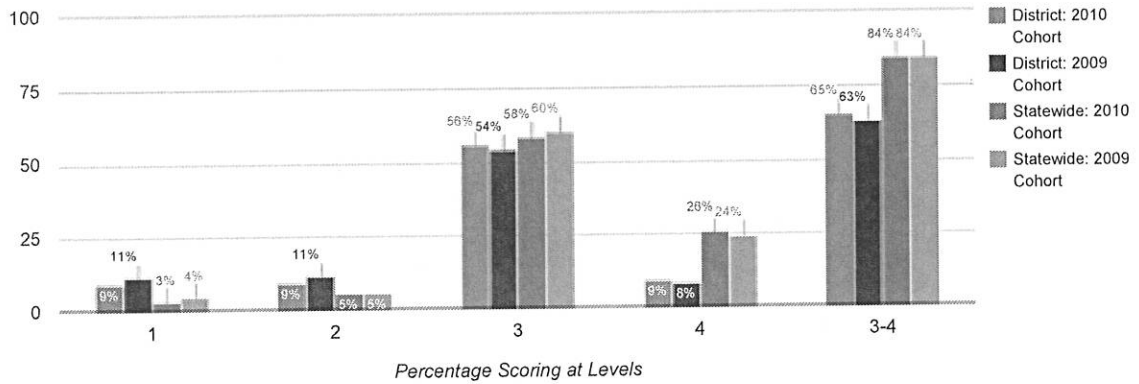


Results by Student Group	2010 Cohort						2009 Cohort					
	Number of Students	Percent Scoring at Level(s)				% Proficient (Levels 3 & above)	Number of Students	Percent Scoring at Level(s)				% Proficient (Levels 3 and 4)
		1	2	3	4 & above			1	2	3	4	
All Students	594	7	7	40	13	53	654	7	6	39	17	56
General Education	473	4	5	47	16	63	522	6	4	44	22	66
Students with Disabilities	121	19	15	13	0	13	132	11	12	20	1	20
American Indian or Alaska Native	1	-	-	-	-	-	2	-	-	-	-	-
Asian or Native Hawaiian/Other Pacific Islander	53	11	2	43	9	53	58	21	9	19	17	36
Black or African American	322	9	8	39	6	45	351	5	7	43	9	52
Hispanic or Latino	79	4	11	51	4	54	74	9	4	43	5	49
White	130	2	3	36	37	73	161	5	2	33	42	75
Multiracial	9	-	-	-	-	-	8	-	-	-	-	-
Small Group Total	10	0	10	60	0	60	10	10	0	70	10	80
Female	308	6	6	41	17	58	307	4	6	43	19	63
Male	286	8	8	40	8	48	347	10	5	35	16	51
English Proficient	547	6	7	41	14	55	603	5	5	41	19	60
Limited English Proficient	47	13	4	28	0	28	51	25	12	18	0	18
Economically Disadvantaged	373	8	9	45	6	51	380	7	8	43	11	54
Not Economically Disadvantaged	221	5	4	33	24	57	274	6	2	33	26	59
Migrant	4	-	-	-	-	-	0	0	0	0	0	0
Not Migrant	590	-	-	-	-	-	654	7	6	39	17	56



### Total Cohort Results in Secondary-Level Mathematics after Four Years of Instruction

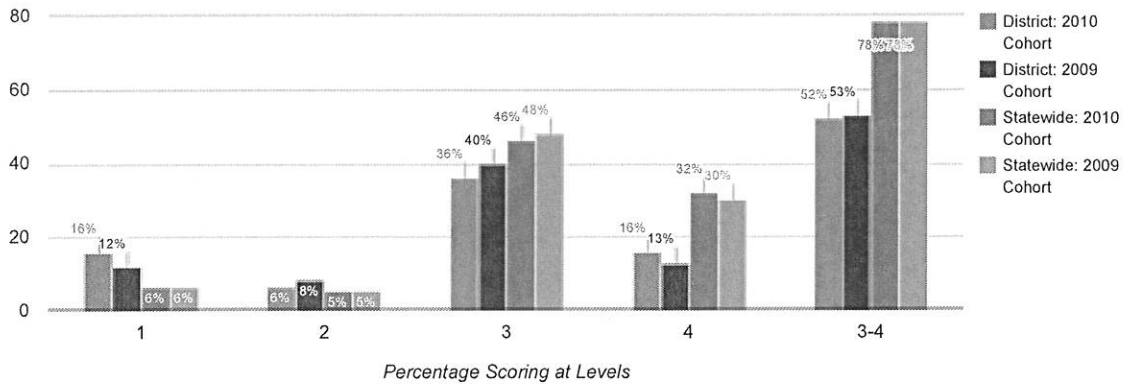
Total cohort results are those for New York State Regents and alternatives to Regents examinations only.



Results by Student Group	2010 Cohort						2009 Cohort					
	Number of Students	Percent Scoring at Level(s)				% Proficient (Levels 3 & above)	Number of Students	Percent Scoring at Level(s)				% Proficient (Levels 3 and 4)
		1	2	3	4 & above			1	2	3	4	
All Students	594	9	9	56	9	65	654	11	11	54	8	63
General Education	473	5	8	66	11	77	522	6	10	65	10	75
Students with Disabilities	121	26	14	19	0	19	132	28	17	11	2	13
American Indian or Alaska Native	1	-	-	-	-	-	2	-	-	-	-	-
Asian or Native Hawaiian/Other Pacific Islander	53	6	11	68	13	81	58	12	12	59	10	69
Black or African American	322	13	11	52	3	55	351	13	12	55	2	57
Hispanic or Latino	79	8	10	58	5	63	74	8	16	50	1	51
White	130	2	5	59	25	85	161	7	7	50	25	76
Multiracial	9	-	-	-	-	-	8	-	-	-	-	-
Small Group Total	10	10	0	80	0	80	10	10	0	90	0	90
Female	308	7	7	59	11	69	307	9	11	60	7	67
Male	286	12	11	53	7	60	347	12	12	50	9	59
English Proficient	547	10	8	55	10	65	603	10	11	53	9	62
Limited English Proficient	47	6	21	68	2	70	51	16	14	67	2	69
Economically Disadvantaged	373	9	11	60	5	65	380	11	12	60	3	63
Not Economically Disadvantaged	221	10	6	49	15	65	274	11	11	47	15	62
Migrant	4	-	-	-	-	-	0	0	0	0	0	0
Not Migrant	590	-	-	-	-	-	654	11	11	54	8	63

### Total Cohort Results in Secondary-Level Global History and Geography after Four Years of Instruction

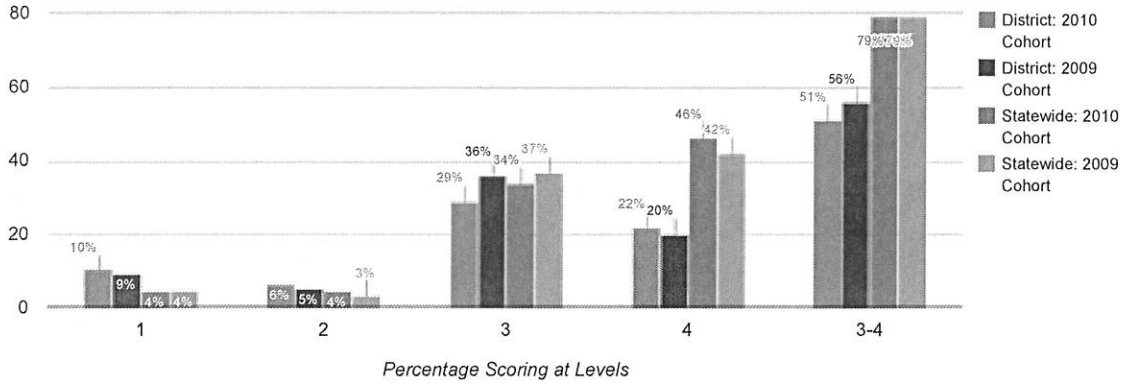
Total cohort results are those for New York State Regents and alternatives to Regents examinations only.



Results by Student Group	2010 Cohort						2009 Cohort					
	Number of Students	Percent Scoring at Level(s)				% Proficient (Levels 3 and 4)	Number of Students	Percent Scoring at Level(s)				% Proficient (Levels 3 and 4)
		1	2	3	4			1	2	3	4	
All Students	594	16	6	36	16	52	654	12	8	40	13	53
General Education	473	12	5	41	20	61	522	8	7	47	16	63
Students with Disabilities	121	34	11	13	0	13	132	27	13	13	1	14
American Indian or Alaska Native	1	—	—	—	—	—	2	—	—	—	—	—
Asian or Native Hawaiian/Other Pacific Islander	53	15	4	36	15	51	58	19	10	28	12	40
Black or African American	322	20	8	35	8	43	351	13	10	42	6	48
Hispanic or Latino	79	11	8	41	10	51	74	12	9	32	7	39
White	130	8	2	33	42	75	161	6	3	42	31	73
Multiracial	9	—	—	—	—	—	8	—	—	—	—	—
Small Group Total	10	30	0	50	0	50	10	0	10	70	0	70
Female	308	14	6	38	16	54	307	10	8	47	12	59
Male	286	18	7	33	16	49	347	13	8	35	13	48
English Proficient	547	15	6	36	17	54	603	11	7	42	14	56
Limited English Proficient	47	26	9	28	0	28	51	20	18	20	0	20
Economically Disadvantaged	373	17	8	39	9	48	380	14	10	42	7	49
Not Economically Disadvantaged	221	14	4	29	28	57	274	8	5	38	21	58
Migrant	4	—	—	—	—	—	0	0	0	0	0	0
Not Migrant	590	—	—	—	—	—	654	12	8	40	13	53

### Total Cohort Results in Secondary-Level U.S. History and Government after Four Years of Instruction

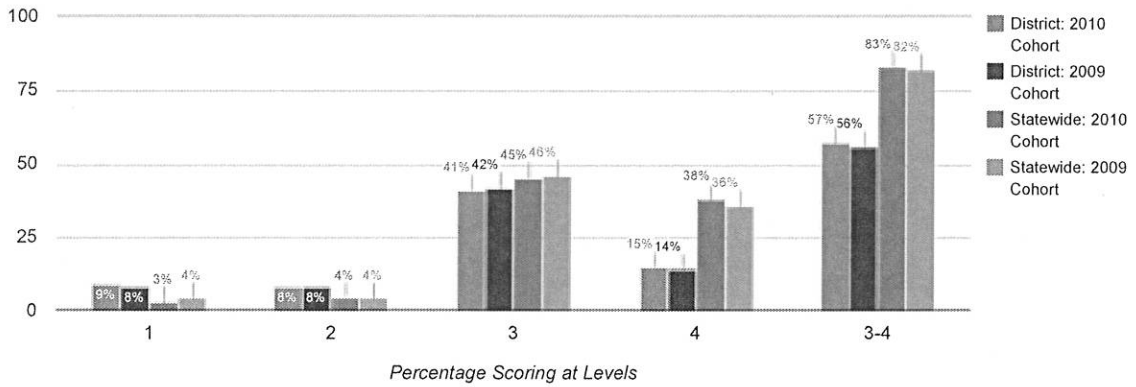
Total cohort results are those for New York State Regents and alternatives to Regents examinations only.



Results by Student Group	2010 Cohort						2009 Cohort					
	Number of Students	Percent Scoring at Level(s)				% Proficient (Levels 3 and 4)	Number of Students	Percent Scoring at Level(s)				% Proficient (Levels 3 and 4)
		1	2	3	4			1	2	3	4	
All Students	594	10	6	29	22	51	654	9	5	36	20	56
General Education	473	8	4	34	26	60	522	8	4	41	24	65
Students with Disabilities	121	21	11	10	3	13	132	14	10	17	5	21
American Indian or Alaska Native	1	-	-	-	-	-	2	-	-	-	-	-
Asian or Native Hawaiian/Other Pacific Islander	53	25	0	30	21	51	58	19	9	21	22	43
Black or African American	322	10	7	30	12	42	351	10	6	40	11	51
Hispanic or Latino	79	10	9	32	16	48	74	8	4	41	11	51
White	130	5	4	22	50	72	161	5	2	30	45	75
Multiracial	9	-	-	-	-	-	8	-	-	-	-	-
Small Group Total	10	10	10	50	10	60	10	10	0	60	0	60
Female	308	11	6	32	21	53	307	8	5	41	20	61
Male	286	10	6	26	22	48	347	10	5	32	21	53
English Proficient	547	8	6	30	23	53	603	8	4	37	22	59
Limited English Proficient	47	40	0	21	6	28	51	29	14	22	2	24
Economically Disadvantaged	373	12	7	32	16	48	380	11	7	41	13	54
Not Economically Disadvantaged	221	7	4	24	32	55	274	7	3	29	31	60
Migrant	4	-	-	-	-	-	0	0	0	0	0	0
Not Migrant	590	-	-	-	-	-	654	9	5	36	20	56

### Total Cohort Results in Secondary-Level Science after Four Years of Instruction

Total cohort results are those for New York State Regents and alternatives to Regents examinations only.



Results by Student Group	2010 Cohort						2009 Cohort					
	Number of Students	Percent Scoring at Level(s)				% Proficient (Levels 3 and 4)	Number of Students	Percent Scoring at Level(s)				% Proficient (Levels 3 and 4)
		1	2	3	4			1	2	3	4	
All Students	594	9	8	41	15	57	654	8	8	42	14	56
General Education	473	7	6	47	19	66	522	6	7	48	17	66
Students with Disabilities	121	17	17	17	2	19	132	14	12	17	2	19
American Indian or Alaska Native	1	-	-	-	-	-	2	-	-	-	-	-
Asian or Native Hawaiian/Other Pacific Islander	53	26	6	28	21	49	58	19	10	33	12	45
Black or African American	322	10	10	43	6	49	351	7	10	48	6	53
Hispanic or Latino	79	9	11	41	11	52	74	7	9	32	8	41
White	130	2	3	39	41	80	161	4	4	37	37	74
Multiracial	9	-	-	-	-	-	8	-	-	-	-	-
Small Group Total	10	0	10	80	0	80	10	20	0	50	10	60
Female	308	10	8	42	16	58	307	9	9	47	13	60
Male	286	8	8	40	15	55	347	6	7	38	15	53
English Proficient	547	7	8	42	17	59	603	6	7	44	15	59
Limited English Proficient	47	40	11	28	2	30	51	27	18	24	2	25
Economically Disadvantaged	373	11	10	45	9	54	380	10	11	45	8	53
Not Economically Disadvantaged	221	7	5	34	26	60	274	5	5	38	22	61
Migrant	4	-	-	-	-	-	0	0	0	0	0	0
Not Migrant	590	-	-	-	-	-	654	8	8	42	14	56

### Regents Examination Results (2013 - 14)

Results by Student Group	Comprehensive English				Integrated Algebra			
	Total Tested	Percent of students scoring at or above			Total Tested	Percent of students scoring at or above		
		55	65	85		55	65	85
All Students	580	80	65	16	883	69	45	5
General Education	479	88	74	19	739	74	51	6
Students with Disabilities	101	44	24	0	144	46	15	0
American Indian or Alaska Native	1	—	—	—	2	—	—	—
Asian or Native Hawaiian/Other Pacific Islander	49	71	59	12	105	77	51	5
Black or African American	319	77	60	9	486	64	41	1
Hispanic or Latino	73	88	66	10	125	67	36	2
White	123	89	80	39	149	80	64	19
Multiracial	15	—	—	—	16	—	—	—
Small Group Total	16	75	69	6	18	78	44	0
Female	314	86	71	18	433	71	48	4
Male	266	74	58	12	450	67	43	6
English Proficient	527	82	67	17	741	70	47	6
Limited English Proficient	53	60	43	0	142	67	36	1
Economically Disadvantaged	395	80	61	8	690	68	42	2
Not Economically Disadvantaged	185	81	73	32	193	74	58	15
Migrant	1	—	—	—	3	—	—	—
Not Migrant	579	—	—	—	880	—	—	—

### Regents Examination Results (2013 - 14)

Results by Student Group	English Language Arts (Common Core)						Algebra I (Common Core)					
	Total Tested	Percent of students scoring at					Total Tested	Percent of students scoring at				
		Level 1	Level 2	Level 3	Level 4	Level 5		Level 1	Level 2	Level 3	Level 4	Level 5
All Students	33	9	3	15	27	45	519	36	29	28	6	1
General Education	31	-	-	-	-	-	451	31	30	31	7	1
Students with Disabilities	2	-	-	-	-	-	68	74	19	7	0	0
American Indian or Alaska Native	0	0	0	0	0	0	2	-	-	-	-	-
Asian or Native Hawaiian/Other Pacific Islander	1	-	-	-	-	-	69	36	28	29	7	0
Black or African American	12	-	-	-	-	-	259	42	28	27	2	0
Hispanic or Latino	2	-	-	-	-	-	73	44	37	16	1	1
White	18	6	0	17	22	56	107	21	23	36	16	4
Multiracial	0	0	0	0	0	0	9	-	-	-	-	-
Small Group Total	15	13	7	13	33	33	11	9	45	36	9	0
Female	22	5	5	18	32	41	258	32	29	31	7	2
Male	11	18	0	9	18	55	261	41	28	26	5	0
English Proficient	33	9	3	15	27	45	439	31	29	32	7	1
Limited English Proficient	0	0	0	0	0	0	80	65	26	9	0	0
Economically Disadvantaged	12	17	8	25	25	25	399	43	31	24	2	0
Not Economically Disadvantaged	21	5	0	10	29	57	120	15	20	43	18	3
Migrant	0	0	0	0	0	0	2	-	-	-	-	-
Not Migrant	33	9	3	15	27	45	517	-	-	-	-	-

### Regents Examination Results (2013 - 14)

Results by Student Group	Geometry				Algebra 2/Trigonometry			
	Total Tested	Percent of students scoring at or above			Total Tested	Percent of students scoring at or above		
		55	65	85		55	65	85
All Students	305	80	62	15	199	60	40	9
General Education	293	81	63	15	196	—	—	—
Students with Disabilities	12	58	33	8	3	—	—	—
American Indian or Alaska Native	1	—	—	—	2	—	—	—
Asian or Native Hawaiian/Other Pacific Islander	41	80	71	12	27	67	48	11
Black or African American	123	74	48	7	73	51	30	3
Hispanic or Latino	34	71	56	3	18	56	33	6
White	99	91	78	31	74	69	51	16
Multiracial	7	—	—	—	5	—	—	—
Small Group Total	8	75	63	0	7	43	14	0
Female	172	80	58	11	113	58	36	6
Male	133	80	67	20	86	63	45	13
English Proficient	284	81	62	15	193	59	39	9
Limited English Proficient	21	71	62	5	6	100	67	17
Economically Disadvantaged	178	75	52	7	97	48	30	4
Not Economically Disadvantaged	127	87	76	26	102	71	50	14
Migrant	2	—	—	—	0	0	0	0
Not Migrant	303	—	—	—	199	60	40	9

### Regents Examination Results (2013 - 14)

Results by Student Group	Global History and Geography				U.S. History & Government			
	Total Tested	Percent of students scoring at or above			Total Tested	Percent of students scoring at or above		
		55	65	85		55	65	85
All Students	778	59	42	12	591	69	55	22
General Education	632	67	49	15	498	75	61	26
Students with Disabilities	146	24	12	2	93	39	20	2
American Indian or Alaska Native	2	–	–	–	1	–	–	–
Asian or Native Hawaiian/Other Pacific Islander	76	62	45	16	62	47	44	24
Black or African American	452	54	35	5	314	69	52	12
Hispanic or Latino	101	59	40	10	70	64	46	16
White	134	74	63	34	128	83	71	47
Multiracial	13	–	–	–	16	–	–	–
Small Group Total	15	67	47	20	17	76	65	29
Female	409	60	43	11	322	70	56	21
Male	369	57	41	14	269	68	53	23
English Proficient	691	60	43	14	513	75	59	25
Limited English Proficient	87	51	28	1	78	32	24	4
Economically Disadvantaged	551	56	37	7	397	64	47	13
Not Economically Disadvantaged	227	66	52	25	194	79	71	41
Migrant	4	–	–	–	2	–	–	–
Not Migrant	774	–	–	–	589	–	–	–



**Regents Examination Results (2013 - 14)**

Results by Student Group	Living Environment				Physical Setting/Earth Science			
	Total Tested	Percent of students scoring at or above			Total Tested	Percent of students scoring at or above		
		55	65	85		55	65	85
All Students	820	72	50	12	277	70	51	25
General Education	693	76	56	14	252	71	54	27
Students with Disabilities	127	47	17	2	25	52	24	4
American Indian or Alaska Native	2	–	–	–	1	–	–	–
Asian or Native Hawaiian/Other Pacific Islander	108	48	35	15	20	85	70	45
Black or African American	444	73	45	5	139	59	39	14
Hispanic or Latino	106	70	48	8	31	68	35	10
White	141	87	74	31	79	85	75	46
Multiracial	19	–	–	–	7	–	–	–
Small Group Total	21	86	62	29	8	75	38	13
Female	417	76	52	10	150	65	47	21
Male	403	68	47	13	127	76	55	29
English Proficient	698	78	55	14	271	70	52	25
Limited English Proficient	122	37	16	2	6	50	17	0
Economically Disadvantaged	613	68	44	7	163	66	41	13
Not Economically Disadvantaged	207	83	67	28	114	75	65	40
Migrant	4	–	–	–	0	0	0	0
Not Migrant	816	–	–	–	277	70	51	25

**Regents Examination Results (2013 - 14)**

Results by Student Group	Physical Setting/Chemistry				Physical Setting/Physics			
	Total Tested	Percent of students scoring at or above			Total Tested	Percent of students scoring at or above		
		55	65	85		55	65	85
All Students	190	78	43	9	66	80	59	12
General Education	185	78	43	9	64	—	—	—
Students with Disabilities	5	80	40	20	2	—	—	—
American Indian or Alaska Native	3	—	—	—	1	—	—	—
Asian or Native Hawaiian/Other Pacific Islander	27	81	52	11	10	60	30	10
Black or African American	72	67	33	3	13	85	38	0
Hispanic or Latino	20	80	35	5	3	—	—	—
White	64	89	52	17	38	87	76	18
Multiracial	4	—	—	—	1	—	—	—
Small Group Total	7	71	43	0	5	60	40	0
Female	113	78	35	5	34	74	56	12
Male	77	78	53	14	32	88	63	13
English Proficient	183	78	43	9	64	—	—	—
Limited English Proficient	7	86	43	14	2	—	—	—
Economically Disadvantaged	97	72	32	5	23	70	43	4
Not Economically Disadvantaged	93	84	54	13	43	86	67	16
Migrant	0	0	0	0	0	0	0	0
Not Migrant	190	78	43	9	66	80	59	12

### Regents Competency Test Results (2013 - 14)

Results by Student Group	Reading		Writing		Math	
	Total Tested	Percent Passing	Total Tested	Percent Passing	Total Tested	Percent Passing
All Students	18	44	2	–	9	33
General Education	0	0	0	0	0	0
Students with Disabilities	18	44	2	–	9	33
Black or African American	14	–	1	–	7	–
Hispanic or Latino	3	–	1	–	1	–
White	1	–	0	0	1	–
Small Group Total	18	44	2	–	9	33
Female	7	43	0	0	4	–
Male	11	45	2	–	5	–
English Proficient	18	44	2	–	9	33
Economically Disadvantaged	14	–	2	–	6	–
Not Economically Disadvantaged	4	–	0	0	3	–
Not Migrant	18	44	2	–	9	33

### Regents Competency Test Results (2013 - 14)

Results by Student Group	Global Studies		U.S. History & Government		Science	
	Total Tested	Percent Passing	Total Tested	Percent Passing	Total Tested	Percent Passing
All Students	19	16	19	26	9	11
General Education	1	–	1	–	0	0
Students with Disabilities	18	–	18	–	9	11
Black or African American	14	7	15	–	8	–
Hispanic or Latino	2	–	2	–	1	–
White	3	–	2	–	0	0
Small Group Total	5	40	19	26	9	11
Female	11	9	10	30	4	–
Male	8	25	9	22	5	–
English Proficient	19	16	19	26	9	11
Economically Disadvantaged	14	7	14	21	7	–
Not Economically Disadvantaged	5	40	5	40	2	–
Not Migrant	19	16	19	26	9	11

**New York State Alternate Assessment (NYSAA) Results (2013 - 14)**

Grade/Subject	Total Tested	Number Scoring at Level(s)				% Proficient (Levels 3 and 4)
		1	2	3	4	
Grade 3 ELA	19	0	1	18	0	95
Grade 3 Math	19	1	5	12	1	68
Grade 4 ELA	17	0	1	11	5	94
Grade 4 Math	17	1	2	8	6	82
Grade 4 Science	16	0	1	15	0	94
Grade 5 ELA	21	3	4	13	1	67
Grade 5 Math	21	1	5	15	0	71
Grade 6 ELA	23	1	5	17	0	74
Grade 6 Math	23	0	5	17	1	78
Grade 7 ELA	16	1	1	14	0	88
Grade 7 Math	17	0	7	9	1	59
Grade 8 ELA	18	1	7	10	0	56
Grade 8 Math	18	3	4	11	0	61
Grade 8 Science	18	0	7	11	0	61
Secondary-Level ELA	20	6	3	11	0	55
Secondary-Level Math	20	2	6	12	0	60
Secondary-Level Science	20	0	8	11	1	60
Secondary-Level Social Studies	20	1	5	13	1	70

### New York State English as a Second Language Achievement Test (NYSESLAT) Results (2013 - 14)

Kindergarten	Total Tested	Percent of Students Scoring at Level(s)			
		Beginning	Intermediate	Advanced	Proficient
All Students	72	21%	26%	50%	3%
General Education	72	21%	26%	50%	3%
Grade 1	Total Tested	Percent of Students Scoring at Level(s)			
		Beginning	Intermediate	Advanced	Proficient
All Students	84	13%	50%	33%	4%
General Education	78	12%	49%	36%	4%
Students with Disabilities	6	33%	67%	0%	0%
Grade 2	Total Tested	Percent of Students Scoring at Level(s)			
		Beginning	Intermediate	Advanced	Proficient
All Students	58	22%	24%	38%	16%
General Education	53	23%	21%	40%	17%
Students with Disabilities	5	20%	60%	20%	0%
Grade 3	Total Tested	Percent of Students Scoring at Level(s)			
		Beginning	Intermediate	Advanced	Proficient
All Students	45	24%	38%	33%	4%
General Education	43	–	–	–	–
Students with Disabilities	2	–	–	–	–
Grade 4	Total Tested	Percent of Students Scoring at Level(s)			
		Beginning	Intermediate	Advanced	Proficient
All Students	51	39%	18%	27%	16%
General Education	42	38%	17%	29%	17%
Students with Disabilities	9	44%	22%	22%	11%
Grade 5	Total Tested	Percent of Students Scoring at Level(s)			
		Beginning	Intermediate	Advanced	Proficient
All Students	46	22%	20%	46%	13%
General Education	42	–	–	–	–
Students with Disabilities	4	–	–	–	–
Grade 6	Total Tested	Percent of Students Scoring at Level(s)			
		Beginning	Intermediate	Advanced	Proficient
All Students	53	51%	11%	28%	9%
General Education	48	50%	10%	29%	10%
Students with Disabilities	5	60%	20%	20%	0%
Grade 7	Total Tested	Percent of Students Scoring at Level(s)			
		Beginning	Intermediate	Advanced	Proficient

All Students	53	28%	15%	45%	11%
General Education	49	–	–	–	–
Students with Disabilities	4	–	–	–	–
Grade 8	Total Tested	Percent of Students Scoring at Level(s)			
		Beginning	Intermediate	Advanced	Proficient
All Students	38	42%	16%	26%	16%
General Education	37	–	–	–	–
Students with Disabilities	1	–	–	–	–
Grade 9	Total Tested	Percent of Students Scoring at Level(s)			
		Beginning	Intermediate	Advanced	Proficient
All Students	56	30%	43%	14%	13%
General Education	55	–	–	–	–
Students with Disabilities	1	–	–	–	–
Grade 10	Total Tested	Percent of Students Scoring at Level(s)			
		Beginning	Intermediate	Advanced	Proficient
All Students	64	41%	30%	22%	8%
General Education	64	41%	30%	22%	8%
Grade 11	Total Tested	Percent of Students Scoring at Level(s)			
		Beginning	Intermediate	Advanced	Proficient
All Students	62	32%	42%	18%	8%
General Education	61	–	–	–	–
Students with Disabilities	1	–	–	–	–
Grade 12	Total Tested	Percent of Students Scoring at Level(s)			
		Beginning	Intermediate	Advanced	Proficient
All Students	33	3%	33%	39%	24%
General Education	32	–	–	–	–
Students with Disabilities	1	–	–	–	–

### Elementary/Middle-Level English Language Arts Results for Accountability

All accountability groups made AYP: NO

Student Group	Made AYP	Tested 95%	Students Enrolled During the Test Administration Period	Percent of Enrolled Students with Valid Test Scores	PI >= EAMO or Safe Harbor Target	Tested Students Enrolled on BEDS Day	PI	EAMO	Safe Harbor Target
All Students	X	✓	3,852	97%	X	3,511	60	87	83
American Indian or Alaska Native	—	—	13	—	—	13	—	—	—
Black or African American	X	✓	2,048	98%	X	1,890	45	66	66
Hispanic or Latino	X	✓	592	97%	X	532	49	69	69
Asian or Native Hawaiian/Other Pacific Islander	X	✓	325	99%	X	299	80	114	102
White	X	✓	1,517*	96%*	X	680	101	105	105
Multiracial	X	✓	110	95%	X	97	55	80	74
Students With Disabilities	X	✓	616	96%	X	590 †	31 †	44	44
Limited English Proficient	X	✓	296	99%	X	291 ‡	32 ‡	45	45
Economically Disadvantaged	X	✓	2,803	98%	X	2,562	44	73	70

Results for the following groups are NOT used to determine AYP.

Student Group	Students Enrolled During the Test Administration Period	Percent of Enrolled Students with Valid Test Scores	Tested Students Enrolled on BEDS Day	PI
Not American Indian or Alaska Native	3,839	97%	3,498	60
Not Black or African American	1,804	96%	1,621	77
Not Hispanic or Latino	3,260	97%	2,979	62
Not Asian or Native Hawaiian/Other Pacific Islander	3,527	97%	3,212	58
Not White	3,088	98%	2,831	50
Not Multiracial	3,742	97%	3,414	60
General Education	3,236	97%	2,953	65
English Proficient	3,556	97%	3,283	63
Not Economically Disadvantaged	1,049	95%	949	104
Male	1,998	97%	1,813	51
Female	1,854	97%	1,698	70
Migrant	10	—	10	—
Not Migrant	3,842	97%	3,501	60

✓ Yes

X No

— There were fewer than 40 students enrolled during the test administration period, so the Percent of Enrolled Students with Valid Test Scores data are suppressed OR there were fewer than 30 tested students enrolled on BEDS day and during the test administration period, so the PI, EAMO, and Safe Harbor Target data are suppressed.

\*The percentage of students tested in the current year fell below 95 percent, so the numbers of enrolled and tested students in the current year and previous year were combined to provide the school/district with another opportunity to meet the participation rate criterion.

† Includes former students with disabilities because the number of students with disabilities in the current year is equal to or greater than 30.

‡ Includes former limited English proficient students because the number of limited English proficient students in the current year is equal to or greater than 30.



### Elementary/Middle-Level Mathematics Results for Accountability

All accountability groups made AYP: NO

Student Group	Made AYP	Tested 95%	Students Enrolled During the Test Administration Period	Percent of Enrolled Students with Valid Test Scores	PI >= EAMO or Safe Harbor Target	Tested Students Enrolled on BEDS Day	PI	EAMO	Safe Harbor Target
All Students	X	✓	3,856	95%	X	3,454	56	84	75
American Indian or Alaska Native	—	—	13	—	—	12	—	—	—
Black or African American	X	✓	2,050	96%	X	1,840	39	58	58
Hispanic or Latino	X	✓	591	95%	X	519	44	67	66
Asian or Native Hawaiian/Other Pacific Islander	X	✓	325	99%	X	309	87	129	106
White	X	✓	1,518*	95%*	X	683	98	101	101
Multiracial	X	X	184*	93%*	X	91	53	71	61
Students With Disabilities	X	✓	1,281*	96%*	X	584 †	31 †	44	44
Limited English Proficient	X	✓	297	99%	X	322 ‡	45 ‡	48	48
Economically Disadvantaged	X	✓	2,806	95%	X	2,512	40	70	62

Results for the following groups are NOT used to determine AYP.

Student Group	Students Enrolled During the Test Administration Period	Percent of Enrolled Students with Valid Test Scores	Tested Students Enrolled on BEDS Day	PI
Not American Indian or Alaska Native	3,843	95%	3,442	56
Not Black or African American	3,504*	96%*	1,614	76
Not Hispanic or Latino	3,265	95%	2,935	58
Not Asian or Native Hawaiian/Other Pacific Islander	3,531	95%	3,145	53
Not White	3,091	96%	2,771	46
Not Multiracial	3,744	95%	3,363	56
General Education	3,237	95%	2,904	61
English Proficient	3,559	95%	3,194	58
Not Economically Disadvantaged	1,916*	96%*	942	100
Male	1,994	95%	1,785	54
Female	1,862	95%	1,669	58
Migrant	10	—	10	—
Not Migrant	3,846	95%	3,444	56

✓ Yes  
X No

— There were fewer than 40 students enrolled during the test administration period, so the Percent of Enrolled Students with Valid Test Scores data are suppressed OR there were fewer than 30 tested students enrolled on BEDS day and during the test administration period, so the PI, EAMO, and Safe Harbor Target data are suppressed.

\*The percentage of students tested in the current year fell below 95 percent, so the numbers of enrolled and tested students in the current year and previous year were combined to provide the school/district with another opportunity to meet the participation rate criterion.

† Includes former students with disabilities because the number of students with disabilities in the current year is equal to or greater than 30.

‡ Includes former limited English proficient students because the number of limited English proficient students in the current year is equal to or greater than 30.

### Elementary/Middle-Level Science Results for Accountability

All accountability groups made AYP: NO

Student Group	Made AYP	Tested 80%	Students Enrolled During the Test Administration Period	Percent of Enrolled Students with Valid Test Scores	PI >= EAMO or Progress Target	Tested Students Enrolled on BEDS Day	PI	EAMO	Progress Target
All Students	X	✓	1,291	94%	X	1,148	144	180	154
American Indian or Alaska Native	—	—	4	—	—	4	—	—	—
Black or African American	X	✓	684	94%	X	614	134	164	146
Hispanic or Latino	✓	✓	213	93%	✓	184	143	164	143
Asian or Native Hawaiian/Other Pacific Islander	X	✓	99	99%	X	94	154	179	167
White	X	✓	247	91%	X	215	170	184	179
Multiracial	✓	✓	44	91%	✓	37	146	175	1
Students With Disabilities	X	✓	215	91%	X	192 †	96 †	154	124
Limited English Proficient	X	✓	90	97%	X	87 ‡	118 ‡	148	130
Economically Disadvantaged	X	✓	943	94%	X	841	132	170	148

Results for the following groups are NOT used to determine AYP.

Student Group	Students Enrolled During the Test Administration Period	Percent of Enrolled Students with Valid Test Scores	Tested Students Enrolled on BEDS Day	PI
Not American Indian or Alaska Native	1,287	94%	1,144	144
Not Black or African American	607	93%	534	156
Not Hispanic or Latino	1,078	94%	964	144
Not Asian or Native Hawaiian/Other Pacific Islander	1,192	93%	1,054	143
Not White	1,044	94%	933	138
Not Multiracial	1,247	94%	1,111	144
General Education	1,076	94%	962	154
English Proficient	1,201	93%	1,073	147
Not Economically Disadvantaged	348	93%	307	176
Male	673	94%	604	140
Female	618	93%	544	149
Migrant	2	—	2	—
Not Migrant	1,289	94%	1,146	144

✓ Yes

X No

— There were fewer than 40 students enrolled during the test administration period, so the Percent of Enrolled Students with Valid Test Scores data are suppressed OR there were fewer than 30 tested students enrolled on BEDS day and during the test administration period, so the PI, EAMO, and Progress Target data are suppressed.

† Includes former students with disabilities because the number of students with disabilities in the current year is equal to or greater than 30.

‡ Includes former limited English proficient students because the number of limited English proficient students in the current year is equal to or greater than 30.

### Secondary-Level English Language Arts Results for Accountability

All accountability groups made AYP: NO

Student Group	Made AYP	Tested 95%	12th Graders	Percent of 12th Graders with Valid Test Scores	PI >= EAMO or Safe Harbor Target	2010 Accountability Cohort Members	PI	EAMO	Safe Harbor Target
All Students	X	✓	482	99%	X	447	111	161	123
American Indian or Alaska Native	—	—	1	—	—	1	—	—	—
Black or African American	X	✓	242	98%	X	225	92	139	115
Hispanic or Latino	✓	✓	73	97%	✓	59	105	136	105
Asian or Native Hawaiian/Other Pacific Islander	✓	✓	43	100%	✓	47	98	163	90
White	✓	✓	112	99%	✓	107	158	168	154
Multiracial	—	—	11	—	—	8	—	—	—
Students With Disabilities	X	✓	73	100%	X	74 †	36 †	105	62
Limited English Proficient	✓	—	39	—	✓	55 ‡	53 ‡	106	49
Economically Disadvantaged	X	✓	287	99%	X	285	96	146	109

Results for the following groups are NOT used to determine AYP.

Student Group	12th Graders	Percent of 12th Graders with Valid Test Scores	2010 Accountability Cohort Members	PI
Not American Indian or Alaska Native	481	99%	446	111
Not Black or African American	240	99%	222	129
Not Hispanic or Latino	409	99%	388	111
Not Asian or Native Hawaiian/Other Pacific Islander	439	98%	400	112
Not White	370	98%	340	96
Not Multiracial	471	99%	439	111
General Education	409	98%	373	125
English Proficient	443	99%	403	118
Not Economically Disadvantaged	195	98%	162	135
Male	227	97%	212	98
Female	255	100%	235	122
Migrant	0	—	3	—
Not Migrant	482	99%	444	111

✓ Yes

X No

— There were fewer than 40 12th graders, so the Percent of 12th Graders with Valid Test Scores data are suppressed OR there were fewer than 30 students in the 2010 accountability cohort, so PI, EAMO, and Safe Harbor Target data are suppressed.

† Includes former students with disabilities because the number of students with disabilities in the current year is equal to or greater than 30.

‡ Includes former limited English proficient students because the number of limited English proficient students in the current year is equal to or greater than 30.

### Secondary-Level Mathematics Results for Accountability

All accountability groups made AYP: NO

Student Group	Made AYP	Tested 95%	12th Graders	Percent of 12th Graders with Valid Test Scores	PI >= EAMO or Safe Harbor Target	2010 Accountability Cohort Members	PI	EAMO	Safe Harbor Target
All Students	X	✓	482	99%	X	447	105	143	110
American Indian or Alaska Native	—	—	1	—	—	1	—	—	—
Black or African American	X	✓	242	98%	X	225	86	114	99
Hispanic or Latino	✓	✓	73	100%	✓	59	97	112	87
Asian or Native Hawaiian/Other Pacific Islander	✓	✓	43	100%	✓	47	132	157	114
White	✓	✓	112	100%	✓	107	139	152	139
Multiracial	—	—	11	—	—	8	—	—	—
Students With Disabilities	X	✓	73	99%	X	74 †	46 †	93	59
Limited English Proficient	X	—	39	—	X	55 ‡	93 ‡	106	95
Economically Disadvantaged	X	✓	287	100%	X	285	97	125	100

Results for the following groups are NOT used to determine AYP.

Student Group	12th Graders	Percent of 12th Graders with Valid Test Scores	2010 Accountability Cohort Members	PI
Not American Indian or Alaska Native	481	99%	446	105
Not Black or African American	240	100%	222	125
Not Hispanic or Latino	409	99%	388	107
Not Asian or Native Hawaiian/Other Pacific Islander	439	99%	400	102
Not White	370	99%	340	95
Not Multiracial	471	99%	439	105
General Education	409	99%	373	117
English Proficient	443	99%	403	108
Not Economically Disadvantaged	195	98%	162	120
Male	227	99%	212	102
Female	255	100%	235	109
Migrant	0	—	3	—
Not Migrant	482	99%	444	106

✓ Yes

X No

— There were fewer than 40 12th graders, so the Percent of 12th Graders with Valid Test Scores data are suppressed OR there were fewer than 30 students in the 2010 accountability cohort, so PI, EAMO, and Safe Harbor Target data are suppressed.

† Includes former students with disabilities because the number of students with disabilities in the current year is equal to or greater than 30.

‡ Includes former limited English proficient students because the number of limited English proficient students in the current year is equal to or greater than 30.

**Unweighted Combined ELA and Math PIs**

Student Group	Elementary/ Middle-Level ELA PI	Elementary/ Middle-Level Math PI	Secondary-Level ELA PI	Secondary-Level Math PI	Unweighted Combined PI
All Students	60	56	111	105	83
American Indian or Alaska Native	—	—	—	—	—
Black or African American	45	39	92	86	66
Hispanic or Latino	49	44	105	97	74
Asian or Native Hawaiian/Other Pacific Islander	80	87	98	132	99
White	101	98	158	139	124
Multiracial	55	53	—	—	54
Students With Disabilities	31	31	36	46	36
Limited English Proficient	32	45	53	93	56
Economically Disadvantaged	44	40	96	97	69

— There were not enough students to determine a Performance Index.

### Overall Graduation Rate for Accountability

All accountability groups made AYP: NO

Student Group	Made AYP
All Students	✓
American Indian or Alaska Native	—
Black or African American	✓
Hispanic or Latino	✓
Asian or Native Hawaiian/Other Pacific Islander	✗
White	✓
Multiracial	—
Students With Disabilities	✓
Limited English Proficient	✓
Economically Disadvantaged	✗

✓ Made AYP  
 ✗ Did not make AYP  
 — There were not enough students to make an AYP determination.

### Four-Year Graduation-Rate Total Cohort for Accountability

Student Group	Met Graduation-Rate Criterion	2009 Four-Year Graduation-Rate Total Cohort	Graduation Rate	State Standard	Progress Target
All Students	✓	654	54%	80%	52%
American Indian or Alaska Native	—	2	—	—	—
Black or African American	✓	351	49%	80%	47%
Hispanic or Latino	✗	74	45%	80%	56%
Asian or Native Hawaiian/Other Pacific Islander	✗	58	34%	80%	41%
White	✓	161	76%	80%	73%
Multiracial	—	8	—	—	—
Students With Disabilities	✓	132 †	32% †	80%	26%
Limited English Proficient	✗	56 ‡	16% ‡	80%	38%
Economically Disadvantaged	✗	380	50%	80%	52%

✓ Graduation rate is equal to or greater than the State Standard or the group's Progress Target.  
 ✗ Graduation rate is less than the State Standard and the group's Progress Target.  
 — There were fewer than 30 students in the cohort.  
 † Includes former students with disabilities because the number of students with disabilities in the current year is equal to or greater than 30.  
 ‡ Includes former limited English proficient students because the number of limited English proficient students in the current year is equal to or greater than 30.

### Five-Year Graduation-Rate Total Cohort for Accountability

Student Group	Met Graduation-Rate Criterion	2008 Five-Year Graduation-Rate Total Cohort	Graduation Rate	State Standard	Progress Target
All Students	X	705	57%	80%	63%
American Indian or Alaska Native	—	5	—	—	—
Black or African American	X	417	51%	80%	62%
Hispanic or Latino	✓	92	57%	80%	50%
Asian or Native Hawaiian/Other Pacific Islander	X	52	46%	80%	66%
White	✓	132	79%	80%	72%
Multiracial	—	7	—	—	—
Students With Disabilities	X	150 †	29% †	80%	43%
Limited English Proficient	✓	51 ‡	53% ‡	80%	46%
Economically Disadvantaged	X	365	56%	80%	63%

✓ Graduation rate is equal to or greater than the State Standard or the group's Progress Target.  
 X Graduation rate is less than the State Standard and the group's Progress Target.  
 — There were fewer than 30 students in the cohort.  
 † Includes former students with disabilities because the number of students with disabilities in the current year is equal to or greater than 30.  
 ‡ Includes former limited English proficient students because the number of limited English proficient students in the current year is equal to or greater than 30.



### Graduation Rates for Non-AYP Groups for Accountability

Results for the following groups are NOT used to determine AYP.

Student Group	Four-Year Graduation-Rate Total Cohort		Five-Year Graduation-Rate Total Cohort	
	2009 Four-Year Graduation-Rate Total Cohort	Graduation Rate	2008 Five-Year Graduation-Rate Total Cohort	Graduation Rate
Not American Indian or Alaska Native	652	54%	700	57%
Not Black or African American	303	59%	288	65%
Not Hispanic or Latino	580	55%	613	57%
Not Asian or Native Hawaiian/Other Pacific Islander	596	56%	653	58%
Not White	493	46%	573	52%
Not Multiracial	646	54%	698	57%
General Education	522	59%	558	64%
English Proficient	603	57%	659	57%
Not Economically Disadvantaged	274	59%	340	57%
Male	347	49%	328	54%
Female	307	60%	377	59%
Migrant	0	—	0	—
Not Migrant	654	54%	705	57%

— There were fewer than 30 students in the cohort.

### Graduation Rates for Regents with Advanced Designation and CTE Endorsement for Accountability

Percentage of 2009 Graduation-Rate Total Cohort members who graduated as of August 31, 2013 with:

Regents Diploma with an Advanced Designation (This District)	Regents Diploma with an Advanced Designation (Statewide)	Percentage in This District Exceeded Statewide
12%	31%	NO